

Laser Parts & Consumables Suitable for Bystronic® Lasers



rellaser.com | laser@rell.com

Why Richardson Electronics?



Global Headquarters in LaFox, Illinois, U.S.A.






Richardson Electronics is a global distributor of RF tubes (power grid tubes) and consumables used in industrial lasers. With over 75 years of experience and sales offices and stocking locations around the world, we provide the highest standard of quality and service. Our commitment to providing the best products to meet our customers' needs is second to none.

We stock critical components for laser systems and provide expert assistance in selecting replacement products and alternatives. Richardson Electronics is a world leading supplier of laser consumables. We have an extensive global supply network which helps us maintain a large inventory of replacement parts for laser machines from the industry's leading manufacturers.

All of Richardson Electronics' laser consumables are manufactured to the highest standards of quality and performance that meet, or exceed the OEM's original specifications. Our replacement parts for Bystronic® and other major manufacturers' lasers, deliver the same level of performance as OEM parts, but are a far more cost effective alternative.

Contact Richardson Electronics today for more information, or request a quote for your laser replacement parts.

Index

	Page
 Bellows	19
 Filters - Air and Dust Collection	29
 Laser Consumables	5
 Optics and Cleaning Supplies	15
 RF/Switch Tube and Accessories	17



Laser Consumables



Richardson Electronics offers an extensive selection of nozzle sizes and configurations to cover the full range of laser capabilities. Our nozzles and ceramics offer OEM-quality at competitive prices. With both the new push-fit style and original threaded style in stock, we can supply the nozzles you need tomorrow and we are always adding new consumables, so please check with us if you do not find the parts you need.



Push-Fit Nozzles for Bystronic Fiber Lasers

NK Series Classic Nozzles



NK Series Classic Nozzles (Sold in packages of 10)

OEM No.	Order No.	Description	Size
10049747	RNB/NK1015C	Nozzle DW NK1015 Classic	1.0
10035275	RNB/NK1215C	Nozzle DW NK1215 Classic	1.2
10035278	RNB/NK1515C	Nozzle DW NK1515 Classic	1.5
10035290	RNB/NK1715C	Nozzle DW NK1715 Classic	1.7
10035292	RNB/NK2015C	Nozzle DW NK2015 Classic	2.0
10035294	RNB/NK2515C	Nozzle DW NK2515 Classic	2.5
10035296	RNB/NK2520C	Nozzle DW NK2520 Classic	2.5
10035298	RNB/NK3017C	Nozzle DW NK3017 Classic	3.0
10035301	RNB/NK3020C	Nozzle DW NK3020 Classic	3.0
10068496	RNB/NK3517C	Nozzle DW NK3517 Classic	3.5
10035302	RNB/NK3530C	Nozzle DW NK3530 Classic	3.5
10068498	RNB/NK4017C	Nozzle DW NK4017 Classic	4.0

NK Series Precision Nozzles



NK Series Precision Nozzles (Sold in packages of 10)

OEM No.	Order No.	Description	Size
10097525	RNB/NK1015P	Nozzle NK1015 Precision	1.0
10097528	RNB/NK1215P	Nozzle NK1215 Precision	1.2
10097531	RNB/NK1515P	Nozzle NK1515 Precision	1.5
10097533	RNB/NK1715P	Nozzle NK1715 Precision	1.7
10119813	RNB/NK1717P	Nozzle NK1717 Precision	1.7
10097534	RNB/NK2015P	Nozzle NK2015 Precision	2.0
10097537	RNB/NK2515P	Nozzle NK2515 Precision	2.5
10097549	RNB/NK2520P	Nozzle NK2520 Precision	2.5
10097543	RNB/NK3017P	Nozzle NK3017 Precision	3.0
10097551	RNB/NK3020P	Nozzle NK3020 Precision	3.0
10097553	RNB/NK3517P	Nozzle NK3517 Precision	3.5
10097552	RNB/NK3530P	Nozzle NK3530 Precision	3.5
10097554	RNB/NK4017P	Nozzle NK4017 Precision	4.0



Push-Fit Nozzles for Bystronic Fiber Lasers

HK Series Classic Nozzles



HK Series Classic Nozzles (Sold in packages of 10)			
OEM No.	Order No.	Description	Size
10048529	RNB/HK08C	Nozzle DW HK 0.8 Classic	0.8
10035266	RNB/HK10C	Nozzle DW HK 10 Classic	1.0
10035267	RNB/HK12C	Nozzle DW HK 12 Classic	1.2
10035268	RNB/HK15C	Nozzle DW HK 15 Classic	1.5
10035269	RNB/HK17C	Nozzle DW HK 17 Classic	1.7
10035270	RNB/HK20C	Nozzle DW HK 20 Classic	2.0
10035271	RNB/HK25C	Nozzle DW HK 25 Classic	2.5
10035272	RNB/HK30C	Nozzle DW HK 30 Classic	3.0
10049744	RNB/HK35C	Nozzle DW HK 35 Classic	3.5

HK Series Precision Nozzles



HK Series Precision Nozzles (Sold in packages of 10)			
OEM No.	Order No.	Description	Size
10097507	RNB/HK10P	Nozzle HK10 Precision	1.0
10097508	RNB/HK12P	Nozzle HK12 Precision	1.2
10097509	RNB/HK15P	Nozzle HK15 Precision	1.5
10097510	RNB/HK17P	Nozzle HK17 Precision	1.7
10097511	RNB/HK20P	Nozzle HK20 Precision	2.0
10097512	RNB/HK25P	Nozzle HK25 Precision	2.5
10097513	RNB/HK30P	Nozzle HK30 Precision	3.0
10097514	RNB/HK35P	Nozzle HK35 Precision	3.5



Push-Fit Nozzles for Bystronic Fiber Lasers

H Series Precision Nozzles



H Series Precision Nozzles (Sold in packages of 10)			
OEM No.	Order No.	Description	Size
10117149	RNB/H10P	Nozzle H10 Precision	1.0
10117150	RNB/H12P	Nozzle H12 Precision	1.2
10117151	RNB/H15P	Nozzle H15 Precision	1.5
10117153	RNB/H17P	Nozzle H17 Precision	1.7
10097541	RNB/H20P	Nozzle H20 Precision	2.0
10097542	RNB/H25P	Nozzle H25 Precision	2.5
10117154 & 10097154	RNB/H30P	Nozzle H30 Precision	3.0
10117152 & 10097152	RNB/H35P	Nozzle H35 Precision	3.5

F Series Classic Nozzles



F Series Classic Nozzles (Sold in packages of 10)			
OEM No.	Order No.	Description	Size
10084700	RNB/F20C	Nozzle DW F20 Classic	2.0
10084701	RNB/F25C	Nozzle DW F25 Classic	2.5
10066333	RNB/F30C	Nozzle DW F30 Classic	3.0
10090091	RNB/F35C	Nozzle DW F35 Classic	3.5
10066331	RNB/F40C	Nozzle DW F40 Classic	4.0
10066330	RNB/F45C	Nozzle DW F45 Classic	4.5
10090092	RNB/F50C	Nozzle DW F50 Classic	5.0
10086053	RNB/F55C	Nozzle DW F55 Classic	5.5
10086069	RNB/F60C	Nozzle DW F60 Classic	6.0

F Series Precision Nozzles



F Series Precision Nozzles (Sold in packages of 10)			
OEM No.	Order No.	Description	Size
10118050	RNB/F20P	Nozzle DW F20 Precision	2.0
10118051	RNB/F25P	Nozzle DW F25 Precision	2.5
10118057	RNB/F30P	Nozzle DW F30 Precision	3.0
10118052	RNB/F35P	Nozzle DW F35 Precision	3.5
10118053	RNB/F40P	Nozzle DW F40 Precision	4.0
10118058	RNB/F45P	Nozzle DW F45 Precision	4.5
10118055	RNB/F50P	Nozzle DW F50 Precision	5.0
10118054	RNB/F55P	Nozzle DW F55 Precision	5.5
10118056	RNB/F60P	Nozzle DW F60 Precision	6.0



Threaded Nozzles

HK-Series Threaded Nozzles



HK-Series Threaded Copper Nozzles (Sold in packages of 10)			
OEM No.	Order No.	Description	Ref. No.
3-01910	RNB418/10	Nozzle 1.0 mm	HK10S
3-01911	RNB419/125	Nozzle 1.25 mm	HK12S
3-01912	RNB420/15	Nozzle 1.5 mm	HK15S
3-01913	RNB421/175	Nozzle 1.75 mm	HK17S
3-01914	RNB422/20	Nozzle 2.0 mm	HK20S
3-03854	RNB423/25	Nozzle 2.5 mm	HK25S
3-06112	RNB425/30	Nozzle 3.0 mm	HK30S
10045748	RNB424/35	Nozzle 3.5 mm	HK35S



HK-Series Threaded Hard Chromium Plated Nozzles (Sold in packages of 10)			
OEM No.	Order No.	Description	Ref. No.
3-01910	RNB418/10C	Nozzle 1.0 mm Hard Chrome Plated	HK10S-CP
3-01911	RNB419/125C	Nozzle 1.25 mm Hard Chrome Plated	HK12S-CP
3-01912	RNB420/15C	Nozzle 1.5 mm Hard Chrome Plated	HK15S-CP
3-01913	RNB421/175C	Nozzle 1.75 mm Hard Chrome Plated	HK17S-CP
3-01914	RNB422/20C	Nozzle 2.0 mm Hard Chrome Plated	HK20S-CP
3-03854	RNB423/25C	Nozzle 2.5 mm Hard Chrome Plated	HK25S-CP
3-06112	RNB425/30C	Nozzle 3.0 mm Hard Chrome Plated	HK30S-CP
10045748	RNB424/35C	Nozzle 3.5 mm Hard Chrome Plated	HK35S-CP

NK-Series Threaded Nozzles



NK-Series Threaded Copper Nozzles (Sold in packages of 10)			
OEM No.	Order No.	Description	Ref. No.
3-16058	RNB428/10D	Double Nozzle 1.0 mm	NK1015S
3-16059	RNB429-12D	Double Nozzle 1.2 mm	NK1215S
3-16060	RNB430/15D	Double Nozzle 1.5 mm	NK1515S
3-14317	RNB431/17D	Double Nozzle 1.7 mm	NK1715S
3-14318	RNB432/20D	Double Nozzle 2.0 mm	NK2015S
3-14319	RNB433/25D	Double Nozzle 2.5 mm	NK2515S
3-16256	RNB433/25DA	Double Nozzle 2.5 mm	NK2520S
3-16061	RNB435/30D	Double Nozzle 3.0 mm	NK3017S
3-16257	RNB435/30DA	Double Nozzle 3.0 mm	NK3020S
10008419	RNB434/35D	Double Nozzle 3.5 mm	NK3530S



Threaded Nozzles

NK-Series Threaded Nozzles



NK-Series Threaded Hard Chromium Plated Nozzles (Sold in packages of 10)			
OEM No.	Order No.	Description	Ref. No.
3-16058	RNB418/10DC	Double Nozzle 1.0 mm Hard Chrome Plated	NK1015S-CP
3-16059	RNB419/12DC	Double Nozzle 1.2 mm Hard Chrome Plated	NK1215S-CP
3-16060	RNB420/15DC	Double Nozzle 1.5 mm Hard Chrome Plated	NK1515S-CP
3-14317	RNB421/17DC	Double Nozzle 1.7 mm Hard Chrome Plated	NK1715S-CP
3-14318	RNB422/20DC	Double Nozzle 2.0 mm Hard Chrome Plated	NK2015S-CP
3-14319	RNB423/25DC	Double Nozzle 2.5 mm Hard Chrome Plated	NK2515S-CP
3-16061	RNB425/30DC	Double Nozzle 3.0 mm Hard Chrome Plated	NK3017S-CP
10008419	RNB424/35DC	Double Nozzle 3.5 mm Hard Chrome Plated	NK3530S-CP

Standard Copper Threaded Nozzles



Standard Copper Threaded Nozzles (Sold in packages of 10)			
OEM No.	Order No.	Description	Ref. No.
3-01894	RNB403/10	Nozzle 1.0 mm	10
3-01895	RNB404/125	Nozzle 1.25 mm	12
3-01896	RNB420/15	Nozzle 1.5 mm	15

Standard Hard Chromium Plated Threaded Nozzles



Standard Hard Chromium Plated Threaded Nozzles (Sold in packages of 10)			
OEM No.	Order No.	Description	Ref. No.
3-01894	RNB403/10C	Nozzle 1.0 mm Hard Chrome Plated	10CP
3-01895	RNB404/125C	Nozzle 1.25 mm Hard Chrome Plated	12CP
3-01896	RNB420/15C	Nozzle 1.5 mm Hard Chrome Plated	15CP



Threaded Nozzles

H-Series Threaded Nozzles



H-Series Threaded Copper Nozzles (Sold in packages of 10)

OEM No.	Order No.	Description	Ref. No.
3-01899	RNB408/10	Nozzle 1.0mm	H10S
3-01900	RNB409/125	Nozzle 1.25mm	H12S
3-01901	RNB410/15	Nozzle 1.5mm	H15S
3-01902	RNB411/175	Nozzle 1.75mm	H17S
3-01903	RNB412/20	Nozzle 2.0mm	H20S
3-04276	RNB427/25	Nozzle 2.5mm	H25S



H-Series Threaded Hard Chromium Plated Nozzles (Sold in packages of 10)

OEM No.	Order No.	Description	Ref. No.
3-01899	RNB408/10C	Nozzle 1.0mm Hard Chrome Plated	H10S-CP
3-01900	RNB409/125C	Nozzle 1.25mm Hard Chrome Plated	H12S-CP
3-01901	RNB410/15C	Nozzle 1.5mm Hard Chrome Plated	H15S-CP
3-01902	RNB411/175C	Nozzle 1.75mm Hard Chrome Plated	H17S-CP
3-01903	RNB412/20C	Nozzle 2.0mm Hard Chrome Plated	H20S-CP

K-Series Threaded Nozzles



K-Series Threaded Copper Nozzles (Sold in packages of 10)

OEM No.	Order No.	Description	Ref. No.
3-01905	RNB413/10	Nozzle 1.0 mm	K10
3-01906	RNB414/125	Nozzle 1.25 mm	K12
3-01907	RNB415/15	Nozzle 1.5 mm	K15
3-01908	RNB416/175	Nozzle 1.75 mm	K17
3-01909	RNB417/20	Nozzle 2.0 mm	K20
3-04274	RNB426/25	Nozzle 2.5 mm	K25



K-Series Threaded Hard Chromium Plated Nozzles (Sold in packages of 10)

OEM No.	Order No.	Description	Ref. No.
3-01905	RNB413/10C	Nozzle 1.0 mm Hard Chrome Plated	K10-CP
3-01906	RNB414/125C	Nozzle 1.25 mm Hard Chrome Plated	K12-CP
3-01907	RNB415/15C	Nozzle 1.5 mm Hard Chrome Plated	K15-CP
3-01908	RNB416/175C	Nozzle 1.75 mm Hard Chrome Plated	K17-CP
3-01909	RNB417/20C	Nozzle 2.0 mm Hard Chrome Plated	K20-CP
3-04274	RNB426/25C	Nozzle 2.5 mm Hard Chrome Plated	K25-CP



Nozzle Holders and Accessories



OEM No.	Order No.	Description
10075057	RNB57/BAB	Breakaway Insert



OEM No.	Order No.	Description
10074594	RNB594/BL	Automatic Nozzle Body, Lower Part



OEM No.	Order No.	Description
10071494	RNB1494/H	Nozzle Body



OEM No.	Order No.	Description
10011659	RHB659/H	Ceramic Nozzle Holder



OEM No.	Order No.	Description
4-01642	RNB433/R	Ceramic Insulating Ring



OEM No.	Order No.	Description
4-01959	RNB434/R	Conical Ceramic Insulating Ring



OEM No.	Order No.	Description
4-09010	RNB470/CR	Ceramic Insulating Ring



OEM No.	Order No.	Description
3-13113-1	RNB493/SIR	Ceramic Insulating Ring - Small



OEM No.	Order No.	Description
3-13422	RNB494/LIR	Insulating Ring - Large



Nozzle Accessories



OEM No.	Order No.	Description
10032838	RNB525/CR	Ceramic Insulating Ring



OEM No.	Order No.	Description
4-03136	RMB437/SCW	Knurled Screw



OEM No.	Order No.	Description
4-00324	RMB438/SCW	Screw



OEM No.	Order No.	Description
4-03137	RMB439/PIN	Pin



OEM No.	Order No.	Description
3-06035	RMB440/TD	Teflon® Insulating Disk



OEM No.	Order No.	Description
3-03663	RMB469/TD	Teflon Insulating Disk (formerly 3-02951)



OEM No.	Order No.	Description
2-08700	RMB472/SH	Shield Copper



Nozzle Accessories



OEM No.	Order No.	Description
3-11071	RMB473/NUT	Fastener Nut



OEM No.	Order No.	Description
3-05497	RNB432/B	Nozzle Body



OEM No.	Order No.	Description
2-08701	RNB471/B	Nozzle Body



OEM No.	Order No.	Description
3-02291	RNB474/B	Nozzle Body



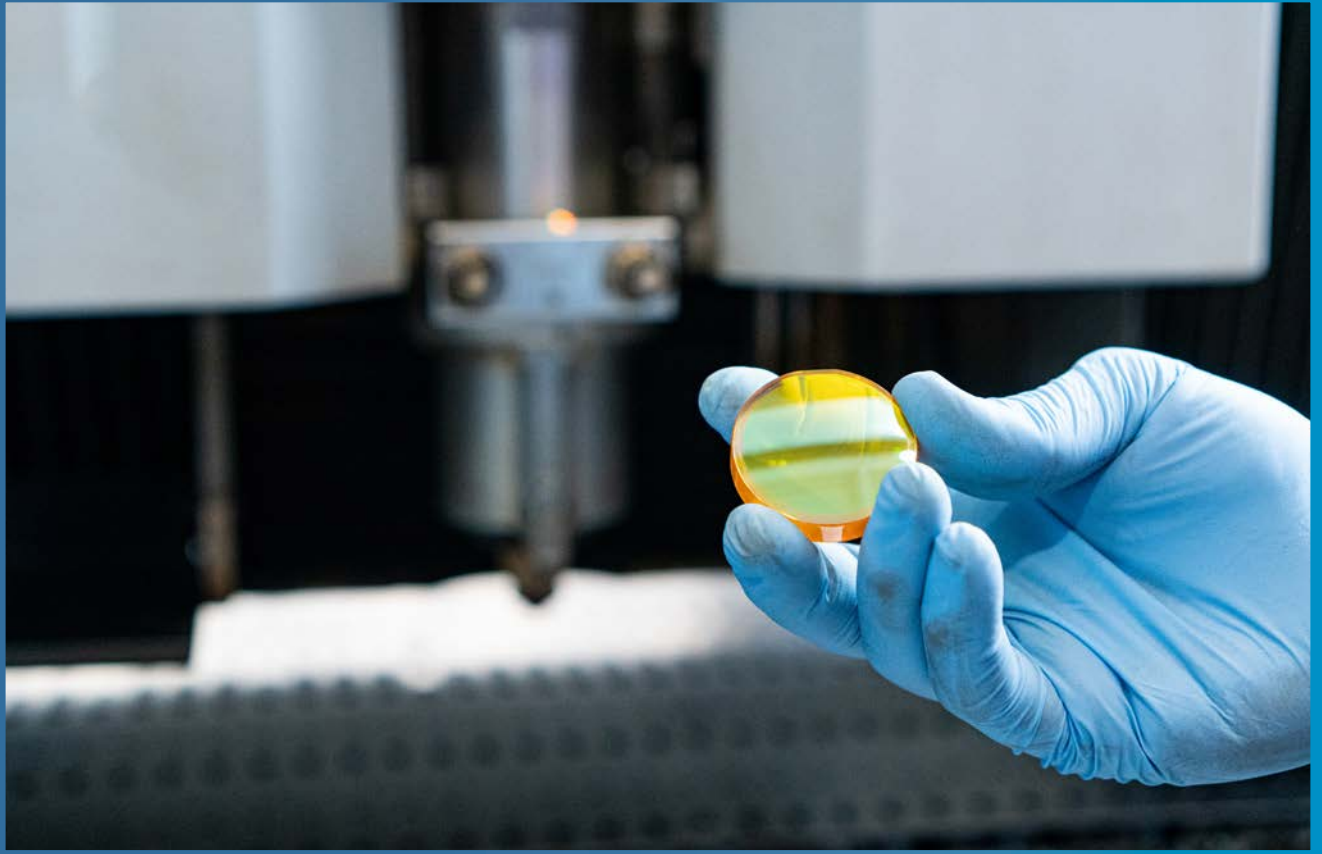
OEM No.	Order No.	Description
2-10837-1	RNB495/B	Nozzle Body



OEM No.	Order No.	Description
10032930	RNB505/B	Nozzle Body



Optics & Cleaning Supplies



Richardson Electronics lenses and mirrors are manufactured using the highest quality materials and tightest process controls available in the industry. Every optic undergoes thorough quality controls to ensure you will get the best performance in your laser. Our standard lenses meet or exceed OEM specifications. Our low absorption lenses are the best choice for laser powers of 4 KW and up. Our optics can help you reduce the total cost of operation of your laser.

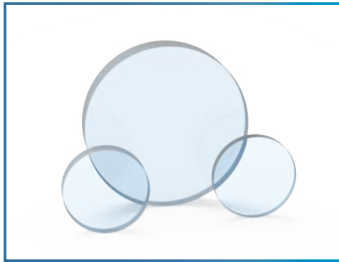


Lenses for CO₂ Lasers



OEM No.	Order No.	Description
4-00186	RLB404/50S	5" F/L, 1.5" Dia., 0.236 ET, AR ≤0.20%
4-05094	RLB400/50S	5" F/L, 1.5" Dia., 0.350 ET, AR ≤0.20%
4-07475	RLB502/50LA	5" F/L, 1.5" Dia., 0.350 ET, AR ≤0.15% (low absorption)
4-00187	RLB403/75S	7.5" F/L, 1.5" Dia., 0.236 ET, AR ≤0.20%
4-05095	RLB401/75S	7.5" F/L, 1.5" Dia., 0.350 ET, AR ≤0.20%
4-07476	RLB503/75LA	7.5" F/L, 1.5" Dia., 0.350 ET, AR ≤0.15% (low absorption)

Protective Lens Covers for Fiber Lasers



OEM No.	Order No.	Description
10046110	RLB110/25.4D1.5T	25.4 x 1.5 mm Thick, Fused Silica Protective Window
10045746	RLB600/36D5T	36 x 5 mm Thick, Fused Silica Protective Window
10086368, 10071591	RLB650/34D3THP	34 x 3 mm Thick, Fused Silica Protective Window
10145862	RLB655/34D3THP-SAP	34 x 3 mm Thick, Sapphire Protective Window (for higher power lasers)

Optics Cleaning Supplies



Optics Cleaning Supplies		
OEM No.	Order No.	Description
	RLT568/TOPOL80	Topol Lens Cleaner (80ml Bottle)
	RLT226/LRGPAPER	Large Lens Cleaning Paper - 50 Pack - Sheet size 4 x 7.75" (102 x 197mm)
500822	EK1546027T	Lens Cleaning Paper - 50 Pack - Sheet size 2.75 x 4.75" (70 x 121mm)
	EK1463728T	Lens Cleaning Solution - 16 oz.
	RLT024/LNSTICK	Knit Polyester Cleaning Swabs (100/pack)
	MIRR-POL/390050	Mirror Polishing Compound



Power Grid Tubes



Richardson Electronics is the number one supplier of replacement RF power tubes for Bystronic® lasers. We supply Thales RF power tubes that are manufactured to the same high standards of quality as the original OEM tubes. Our aftermarket CO₂ laser RF power tubes represent a cost-effective alternative to lower your overall cost of ownership and maintenance for your Bystronic® laser system.

CO₂ laser tubes from Richardson Electronics deliver the same level of performance and dependability as OEM tubes. Our replacement RF power tubes function exactly the same as Bystronic® OEM tubes, but at lower prices.



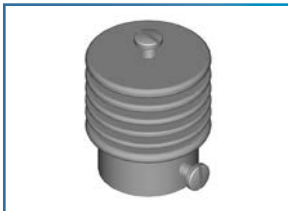
Power Grid Tubes and Accessories



OEM No.	Order No.	Description
	NL10277-1	Force Air Cooled Tetrode



OEM No.	Order No.	Description
	122-0275-001	Replacement socket - Giant 5 pin



OEM No.	Order No.	Description
	40624/S25671	Anode Connector/Heatsink



Bellows



Richardson Electronics is a worldwide distributor of laser bellows for machines from most major manufacturers. We offer bellows made specifically for your laser machine. Designed and manufactured in Europe, our laser bellows are made with heat resistant, flame retardant materials and are able to withstand high operating temperatures while providing years of service.

In addition, tight fitting laser bellows keep unwanted particles out of the laser beam and protect machine rails, racks and bearings, to keep your laser machine running smoothly. Visit rellaser.com for detailed technical drawings of our bellows.

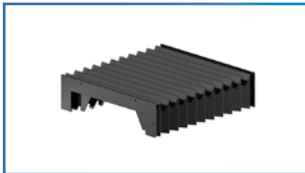
Did you know that delaying the replacement of your worn, hole filled, beam & beam path bellows can increase your monthly usage (and cost) of the nitrogen used in the beam purge? It pays to replace your worn bellows!



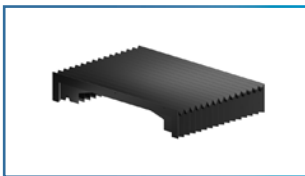
BySpeed 3015



OEM No.	Order No.	Description
1-08992	RBB103/15BPY	Y Axis Beam Bellow



OEM No.	Order No.	Description
1-09451	RBB451/15BY	Y Axis Rail Bellow

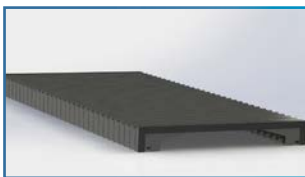


OEM No.	Order No.	Description
1-09598	RBB598/15RX	X Axis Rail Bellow

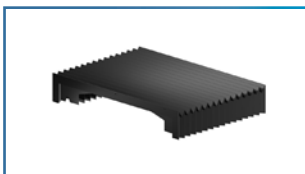


OEM No.	Order No.	Description
1-07623	RBB623/15BPY	X Axis Beam Bellow

BySpeed 4020



OEM No.	Order No.	Description
1-10556	RBB556/4020RX	X Axis Rail Bellow



OEM No.	Order No.	Description
1-09598	RBB598/15RX	X Axis Rail Bellow

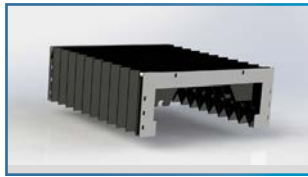


OEM No.	Order No.	Description
1-09598	RBB560/4020BX	X Axis Beam Bellow

Bystronic® machine models are for reference only, please check your machine manual for the actual part number needed. Our technical drawings can be found at www.rellaser.com. Please contact us if you do not find the item you need.

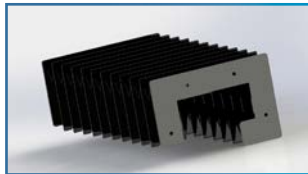


BySpeed Pro 3015



OEM No.	Order No.	Description
10014370, 90010606-2	RBB370/3015RY	Y Axis Rail Bellow

BySpeed II 3015, ByStar II 3015



OEM No.	Order No.	Description
2-04666	RBB100/15RX	X Axis Rail Bellow



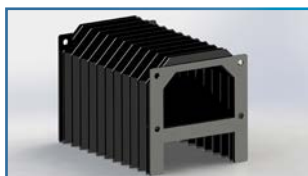
OEM No.	Order No.	Description
1-06523, 1-02954, 1-03629	RBB102/15BRX	X Axis Rail/Beam Bellow



OEM No.	Order No.	Description
1-08992	RBB103/15BPY	Y Axis Beam Bellow



OEM No.	Order No.	Description
1-08296	RBB120/15BPX	X Axis Rail/Beam Bellow



OEM No.	Order No.	Description
3-06607	RBB607/20RBPZ	Z Axis Rail/Beam Bellow

Bystronic® machine models are for reference only, please check your machine manual for the actual part number needed. Our technical drawings can be found at www.rellaser.com. Please contact us if you do not find the item you need.



ByStar 3015



OEM No.	Order No.	Description
2-01024	RBB024/15BY	Y Axis Beam Bellow



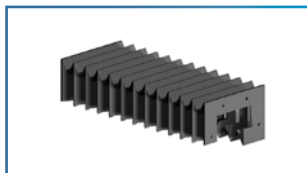
OEM No.	Order No.	Description
2-06418	RBB418/15RX	X Axis Rail Bellow



OEM No.	Order No.	Description
2-03627	RBB627/20BY	Y Axis Beam Bellow



OEM No.	Order No.	Description
1-07710	RBB710/15BY	Y Axis Beam Bellow



OEM No.	Order No.	Description
2-11777	RBB777/15RY	Y Axis Rail Bellow



OEM No.	Order No.	Description
2-04835	RBB835/20RY	Y Axis Beam Bellow



OEM No.	Order No.	Description
2-00994	RBB994/02	Y Axis Beam Bellow

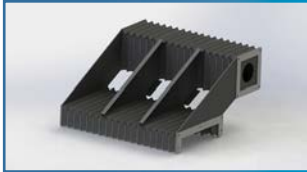
Bystronic® machine models are for reference only, please check your machine manual for the actual part number needed. Our technical drawings can be found at www.rellaser.com. Please contact us if you do not find the item you need.



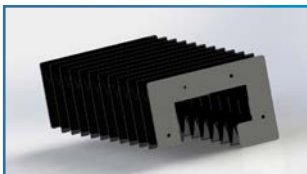
ByStar 4020



OEM No.	Order No.	Description
1-09036	RBB036/20BY	Y Axis Beam Bellow



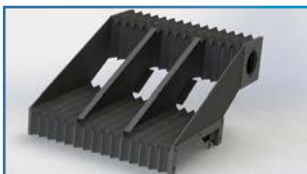
OEM No.	Order No.	Description
1-09038	RBB039/20RBX	X Axis Rail/Beam Bellow



OEM No.	Order No.	Description
2-05092	RBB092/20RY	Y Axis Rail Bellow



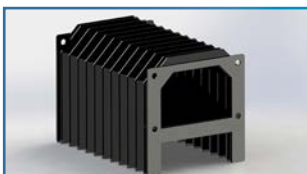
OEM No.	Order No.	Description
2-02177	RBB177/20BY	Y Axis Beam Bellow



OEM No.	Order No.	Description
1-03354	RBB354/20RBX	X Axis Rail/Beam Bellow



OEM No.	Order No.	Description
2-06431	RBB431/20RX	X Axis Rail Bellow



OEM No.	Order No.	Description
3-06607	RBB607/20RBPZ	Z Axis Rail/Beam Bellow

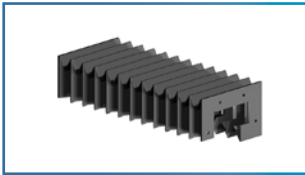
Bystronic® machine models are for reference only, please check your machine manual for the actual part number needed. Our technical drawings can be found at www.rellaser.com. Please contact us if you do not find the item you need.



ByStar 4020



OEM No.	Order No.	Description
2-03627	RBB627/20BY	Y Axis Beam Bellow



OEM No.	Order No.	Description
2-12795	RBB795/20RY	Y Axis Rail Bellow



OEM No.	Order No.	Description
2-04835	RBB835/20RY	Y Axis Rail Bellow

ByStar 4025



OEM No.	Order No.	Description
2-14119	RBB119/25RY	Y Axis Rail Bellow

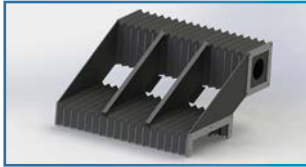
Bystronic® machine models are for reference only, please check your machine manual for the actual part number needed. Our technical drawings can be found at www.rellaser.com. Please contact us if you do not find the item you need.

Richardson Electronics, Ltd. | rellaser.com | laser@rell.com | Find our Local Sales Offices at rell.com/contact-us

Bystronic® is a registered trademark of Bystronic Laser AG. The use of this and other trademarks, product and company names, part numbers and machine model numbers are, for identification and compatibility purposes only and does not imply any affiliation with or endorsement by the trademark holders. All parts advertised are made for and/or by Richardson Electronics, Ltd. All product and company names are trademarks™ or registered® trademarks of their respective holders and we are not implying in any way that our products are original equipment parts.



BySprint 3015

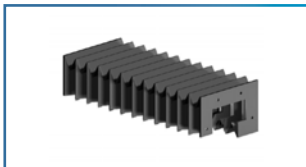


OEM No.	Order No.	Description
1-08659	RBB659/15RBPY	Y Axis Rail/Beam Bellow



OEM No.	Order No.	Description
1-02876	RBB876/15RBPY	Y Axis Rail/Beam Bellow

BySprint Pro 3015



OEM No.	Order No.	Description
2-12410	RBB410/15RX	X Axis Rail Bellow

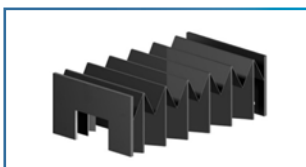


OEM No.	Order No.	Description
10036785	RBB785/3015RUY	Upper Y-axis Rail Bellow

For Fiber Lasers



OEM No.	Order No.	Description
2-06432	RBB101/15RY	BySprint 3015 Fiber - Rail Y

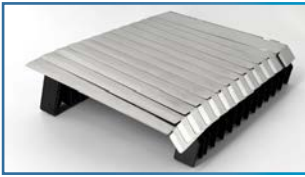


OEM No.	Order No.	Description
10067447	RBB447/3015RZ	BySprint Fiber 3015 & 4020 Z-Axis Rail Bellows

Bystronic® machine models are for reference only, please check your machine manual for the actual part number needed. Our technical drawings can be found at www.rellaser.com. Please contact us if you do not find the item you need.



For Fiber Lasers



OEM No.	Order No.	Description
10072059, 10195548, 10077965	RBB231/RBL	X1 Axis back left -X / +Y ByStar 3015



OEM No.	Order No.	Description
10082147, 10195549, 10077963	RBB232/RBR	X1 Axis back right +X / +Y ByStar 3015



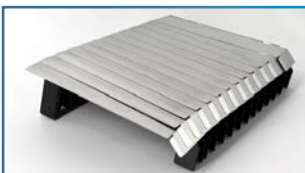
OEM No.	Order No.	Description
10077964, 10072058	RBB233/RFL	X2 Axis front left -X / -Y ByStar 3015



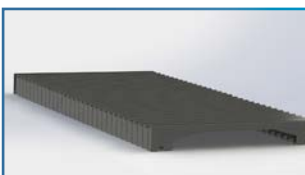
OEM No.	Order No.	Description
10082148, 10077967	RBB234/RFR	X2 Axis front right +X / -Y ByStar 3015



OEM No.	Order No.	Description
10195545, 10208509, 10135964	RBB235/RFL	X2 Axis front left -X / -Y ByStar 3015



OEM No.	Order No.	Description
10135972, 10195547, 10208510	RBB236/RFR	X2 Axis front right +X / -Y ByStar 3015

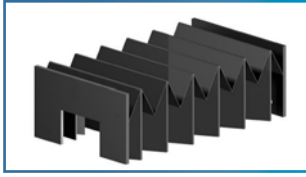


OEM No.	Order No.	Description
10066907, 10151191	RBB237/RBY	Y Axis ByStar 3015, 4020

Bystronic® machine models are for reference only, please check your machine manual for the actual part number needed. Our technical drawings can be found at www.rellaser.com. Please contact us if you do not find the item you need.



For Fiber Lasers



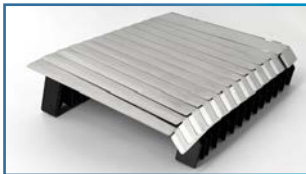
OEM No.	Order No.	Description
10054596	RBB238/RZ	Z Axis ByStar 3015, 4020



OEM No.	Order No.	Description
10076093	RBB241/RBL	X1 Axis back left -X / +Y ByStar 4020



OEM No.	Order No.	Description
10082149	RBB242/RBR	X1 Axis back right +X / +Y ByStar 4020



OEM No.	Order No.	Description
10076094, 10195074	RBB243/RFL	X2 Axis front left -X / -Y ByStar 4020



OEM No.	Order No.	Description
10082150	RBB244/RFR	X2 Axis front right +X / -Y ByStar 4020

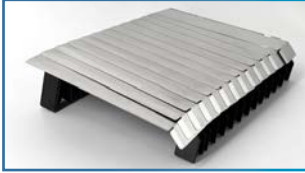


OEM No.	Order No.	Description
10101441	RBB251/RFL	X2 axis Front Left -X / -Y ByStar 6225

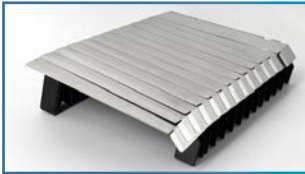
Bystronic® machine models are for reference only, please check your machine manual for the actual part number needed. Our technical drawings can be found at www.rellaser.com. Please contact us if you do not find the item you need.



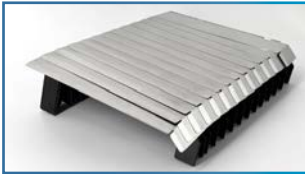
For Fiber Lasers



OEM No.	Order No.	Description
10101443	RBB252/RFR	X2 axis Front Right +X / -Y ByStar 6225



OEM No.	Order No.	Description
10101444	RBB253/RBL	X1 axis Back Left -X / +Y ByStar 6225



OEM No.	Order No.	Description
10101445	RBB254/RBR	X1 axis Back Right +X / +Y ByStar 6225

Bystronic® machine models are for reference only, please check your machine manual for the actual part number needed. Our technical drawings can be found at www.rellaser.com. Please contact us if you do not find the item you need.



Filters - Air and Dust Collection

Richardson Electronics is one of the largest global aftermarket suppliers of the highest quality European-made dust collection filters for industrial lasers. High-quality filtration is directly related to the health and safety of your technicians and staff, and it is important that they are replaced as needed to ensure maximum efficiency and a healthy work environment.



OEM No.	Order No.	Description
10077129	RFB129/1200	Dust Collection Filter for Bystronic



Richardson Electronics is pleased to offer the original Donaldson replacement filters and desiccant cartridges for their Ultrapac 2000 Heatless Air Dryer systems. Replacement components are available individually or as a complete Carepac kit, that includes filters, cartridges, gaskets and cartridge lever (where applicable). If you do not see your dryer model listed below, please give us a call, as we can supply the full line of Donaldson replacement components.

Model Number	Filter Element			Desiccant Cartridges			Carepac Kit***
	Size	MF* - P/N	PE** - P/N	Size	Qty Required	P/N	
UP0015-60	0610	1C121522	1C120022-25	10/2	10	1C977300	1C977184
UP0020-60	0420	1C121524	1C120024-05	10/4	4	1C977301	1C977185
UP0030-60	0520	1C121532	1C120032-05	10/4	6	1C977301	1C977186
UP0040-60	0525	1C121540	1C120040-05	10/4	8	1C977301	1C977187

***The Carepac kit includes:

- O-rings
- Filter Elements
- Gasket
- Desiccant Cartridges
- Cartridge Lever (models UP0020-60 to UP0040-60 only)

*MF is Moisture Drawer

**PE is Particulate Filter



Other Manufacturers

Are you looking for laser parts and consumables for machines from other manufacturers? Look no further! Below you will find links to other laser products we supply.

[Contact Richardson Electronics](#) today for additional information, if you are unable to find the part you need, or [request a quote](#).



Laser Parts for Amada

Optics

rellaser.com/laser-optics/amada



Laser Parts for BLM/Adige

Dust Collection Filters

rellaser.com/dust-collection-filters/blm-adige

Laser Consumables

rellaser.com/laser-nozzles-and-accessories/blm-adige



Laser Parts for Mazak

Optics

rellaser.com/laser-optics/mazak



Laser Parts for Mitsubishi

Optics

rellaser.com/laser-optics/mitsubishi



Laser Parts for Precitec®

Laser Consumables

rellaser.com/laser-nozzles-and-accessories/precitec

Optics and Cleaning Supplies

rellaser.com/laser-optics/precitec



Laser Parts for Prima

Bellows

rellaser.com/laser-bellows/prima



Laser Parts for TRUMPF®

Air Filters

rellaser.com/air-water-filters/trumpf

Bellows

rellaser.com/laser-bellows/trumpf

Driver Stages

rellaser.com/driver-stages/trumpf

Dust Collection Filters

rellaser.com/dust-collection-filters/trumpf

Frequency Converters and Power Supplies

rellaser.com/other-laser-service-parts-trumpf

Hyco Pumps

rellaser.com/vacuum-pumps/trumpf

Laser Consumables

rellaser.com/laser-nozzles-and-accessories/trumpf

Optics

rellaser.com/laser-optics/trumpf

SIKA Meters

rellaser.com/other-laser-service-parts-trumpf

Tubes & Accessories

rellaser.com/power-grid-tubes/trumpf

Water Filters & Filler Material

rellaser.com/air-water-filters/trumpf

Water Treatment Kits

rellaser.com/water-treatment-kits-for-trumpf



POWER & MICROWAVE
TECHNOLOGIES

Find our Local Sales Offices at [rell.com/contact-us](https://www.rell.com/contact-us)

[rellaser.com](https://www.rellaser.com) | laser@rell.com