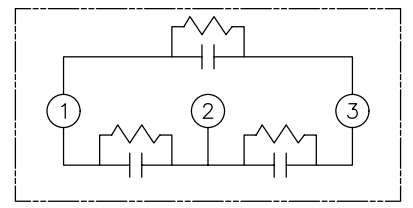
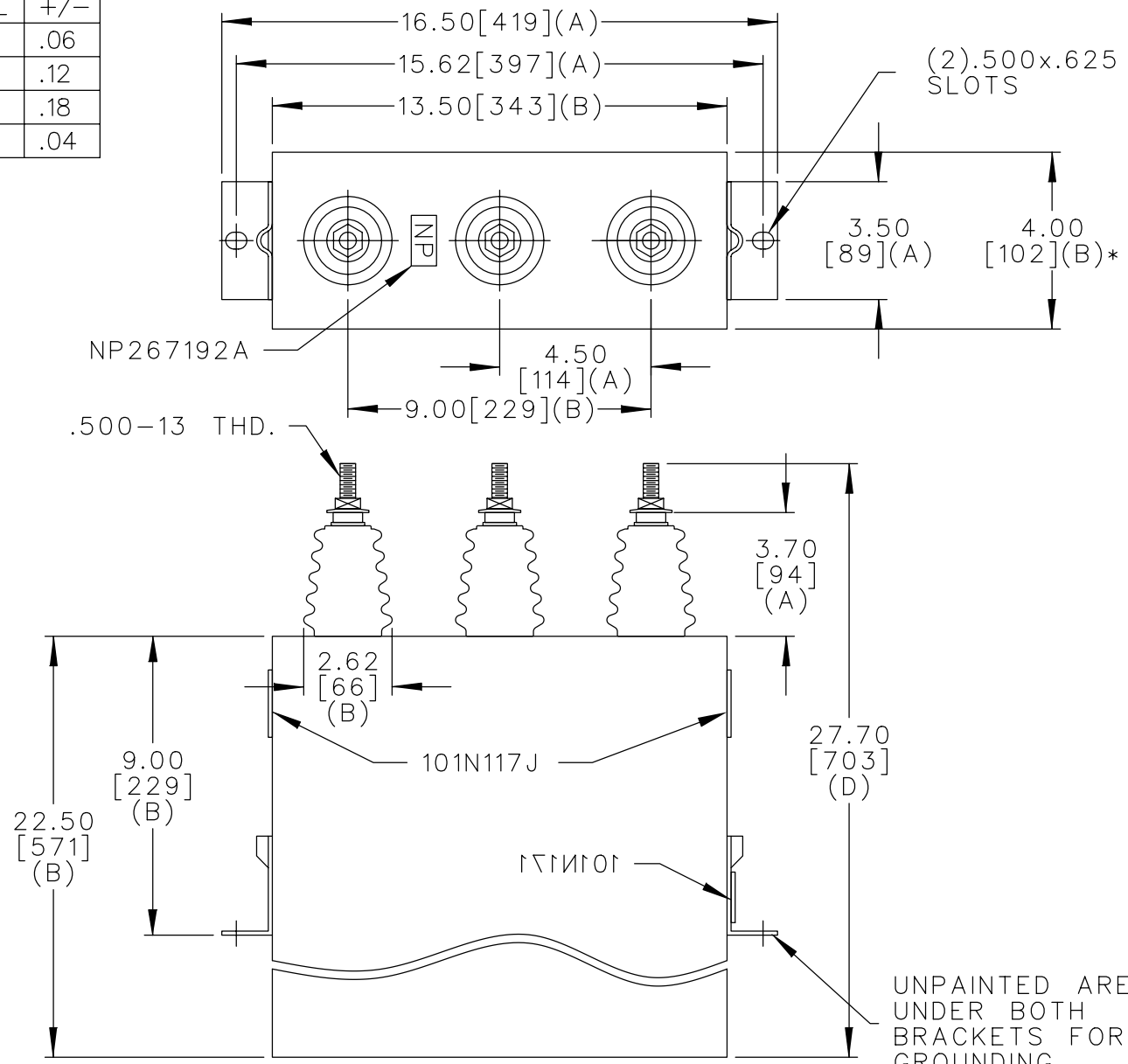


TOL	+/-
A	.06
B	.12
C	.18
D	.04

SIZE	DWG NO.	SH	REV
A	16L0094WH3	2	
REV	3-17-99		
3	McGINN UPDATE TO AUTOCAD		



SCHEMATIC DIAGRAM - 302

RHC 0000-6919-53
 4800V 3 PH KVBIL
 200 KVAR 60 HZ
 CAT. 16L0094WH3
 1.6 GAL.
 MFG DATE
 101N171 READ GEH-2743

* UP TO +.50[13] CASE BULGE

MAX. TERMINAL TIGHTENING TORQUE 15 FT-LBS

NP267192A

	CAPACITOR & POWER PROTECTION FORT EDWARD, N.Y., U.S.A.		SIZE A	FSCM NO	OUTLINE 16L0094WH3	SHEET 2 CONT ON 3
	DRAWN E.McGINN	FEB. 11, 1999	SCALE	DISTR TO		
ISSUED	2-17-99					