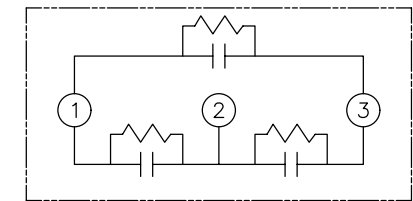
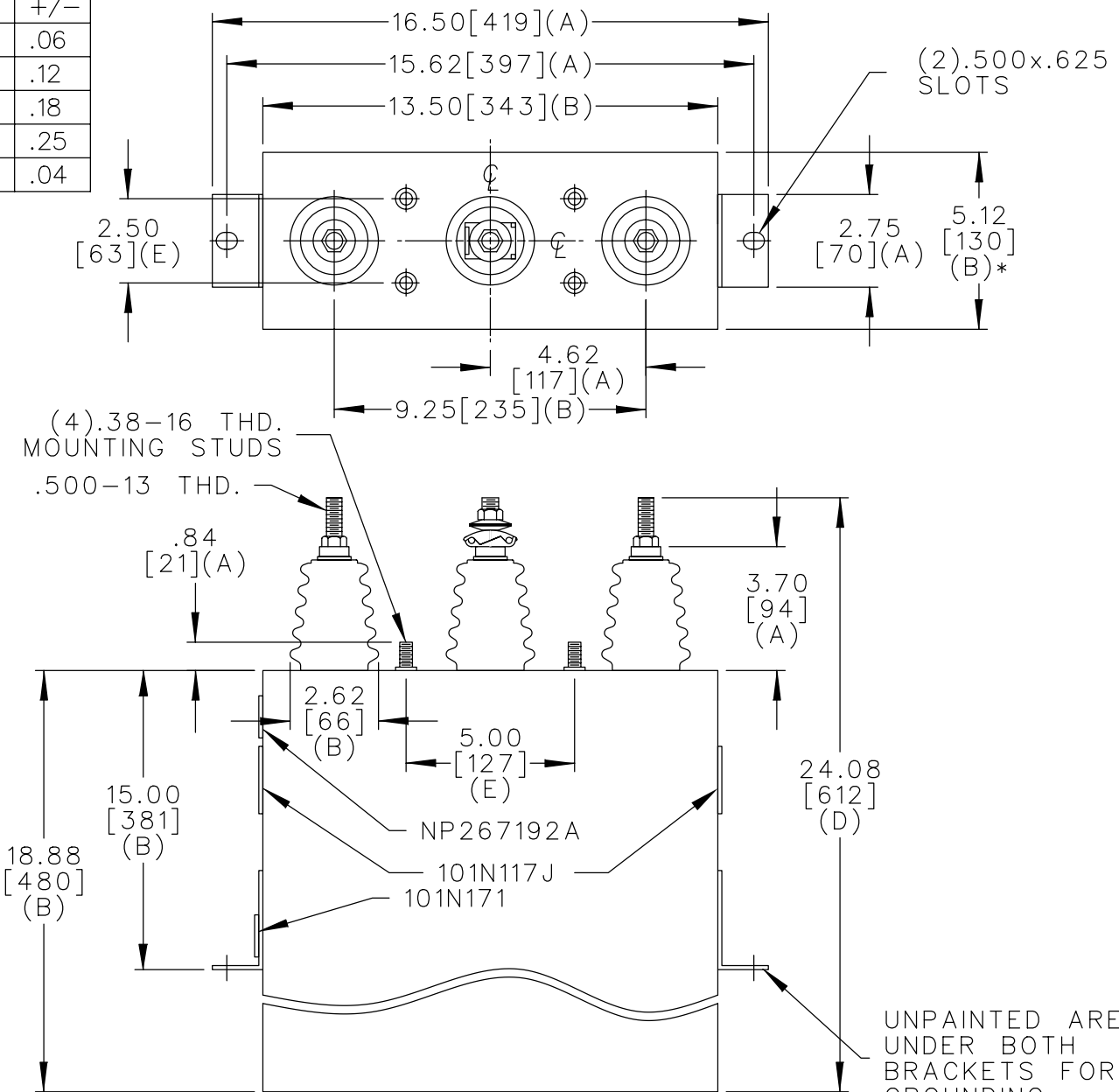


TOL	+/-
A	.06
B	.12
C	.18
D	.25
E	.04

SIZE	DWG NO.	SH	REV
A	16L0159WS3	2	
REV	3-4-98		
3	McGINN	UPDATE	CAT NO




4160V 3PH
 300KVAR 60HZ 60KV BIL
 CAT. 16L0159WS3 NO.
 2.01 GAL. MFG DATE
 GEH-2743

101N171

NOTE:
 ADD "037" SUFFIX TO
 CATALOG NO. FOR CSA
 LABELED PRODUCT.

MAX. TERMINAL
 TIGHTENING TORQUE
 15 FT-LBS

NP267192A

		CAPACITOR & POWER PROTECTION FORT EDWARD, N.Y., U.S.A.	
SIZE	FSCM NO	A	
DRAWN	E.McGINN		
ISSUED	7-9-97	JUNE 27, 1997	
SCALE		SHEET 2 CONT 3	

OUTLINE
16L0159WS3

DISTR TO