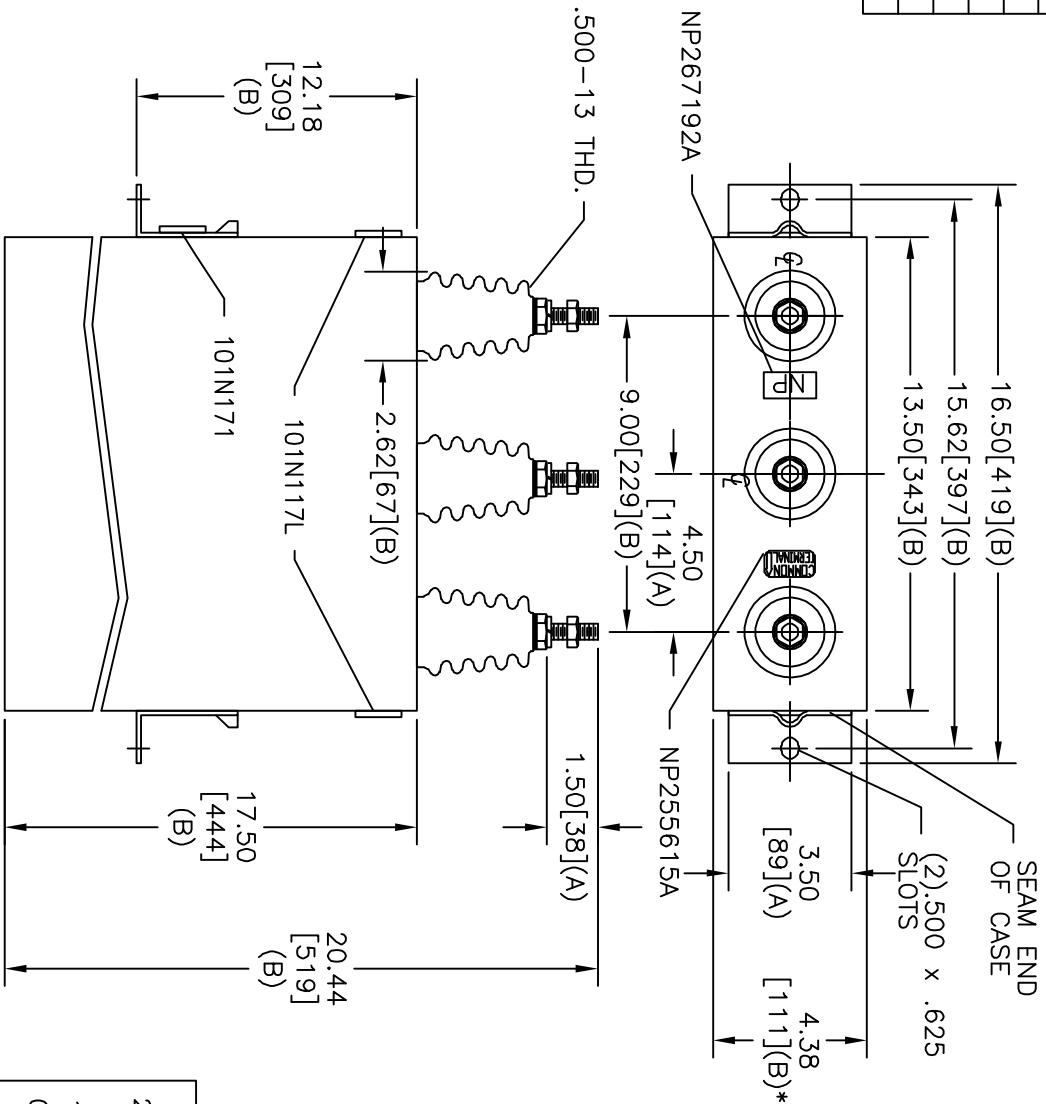
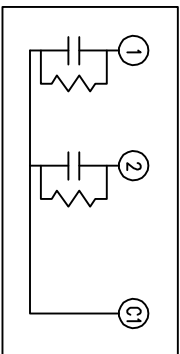


TOL	+/-
A	.06
B	.12
C	.18
D	.25
E	.03



SIZE	DWG NO	SHT	REV
A	16L0383WH3	2	4
REV	DESCRIPTION	DATE	APPROVED
4	RE-TRACE	4/24/2007	BTR

TERM	UF	KVAR
1	34.54	75
2	34.54	75



SCHEMATIC DIAGRAM - 212

2X75 KVAR/TAP	1 PH	KVBIL
2400V	60 HZ	
150 KVAR	SN	
CAT 16L0383WH3	1.6 GAL.	
101N171	MFG DATE	READ GEH - 2743

\* UP TO +.50 CASE BULGE

MAX. TERMINAL TIGHTENING TORQUE 15 FT-LBS

NP267192A



GE ENERGY  
FORT EDWARD, N.Y., U.S.A.

DRAWN

E. McGinn

DATE

8/7/1996

ISSUED

DATE

8/14/1996

SIZE

A

SCALE

OUTLINE

16L0383WH3

SHEET

2

CONT

3

DISTR. TO