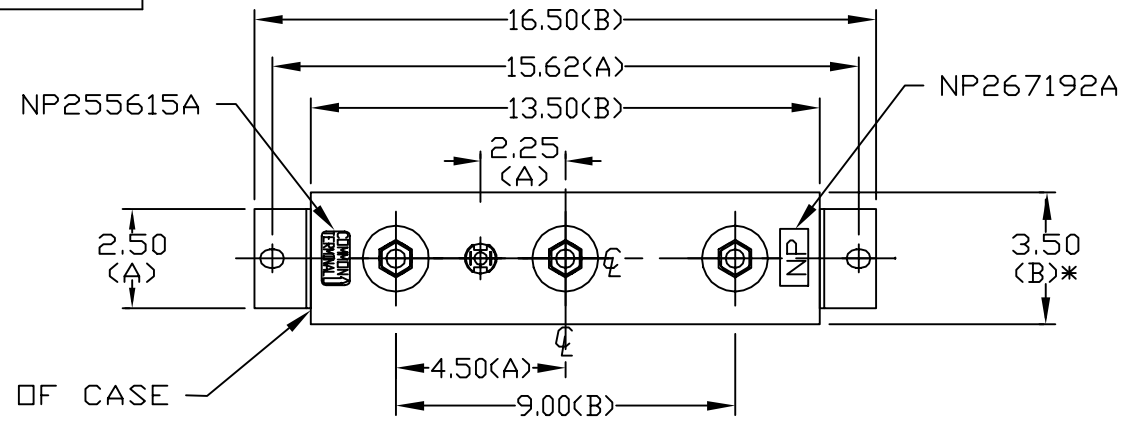
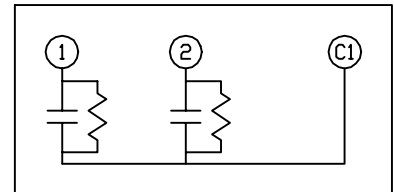


SIZE A	DWG NO 16L0501TH4	SHT 2	REV 6
REV 6	DESCRIPTION UPDATE NAMEPLATE/BORDER	DATE 7/9/03	APPROVED ALC

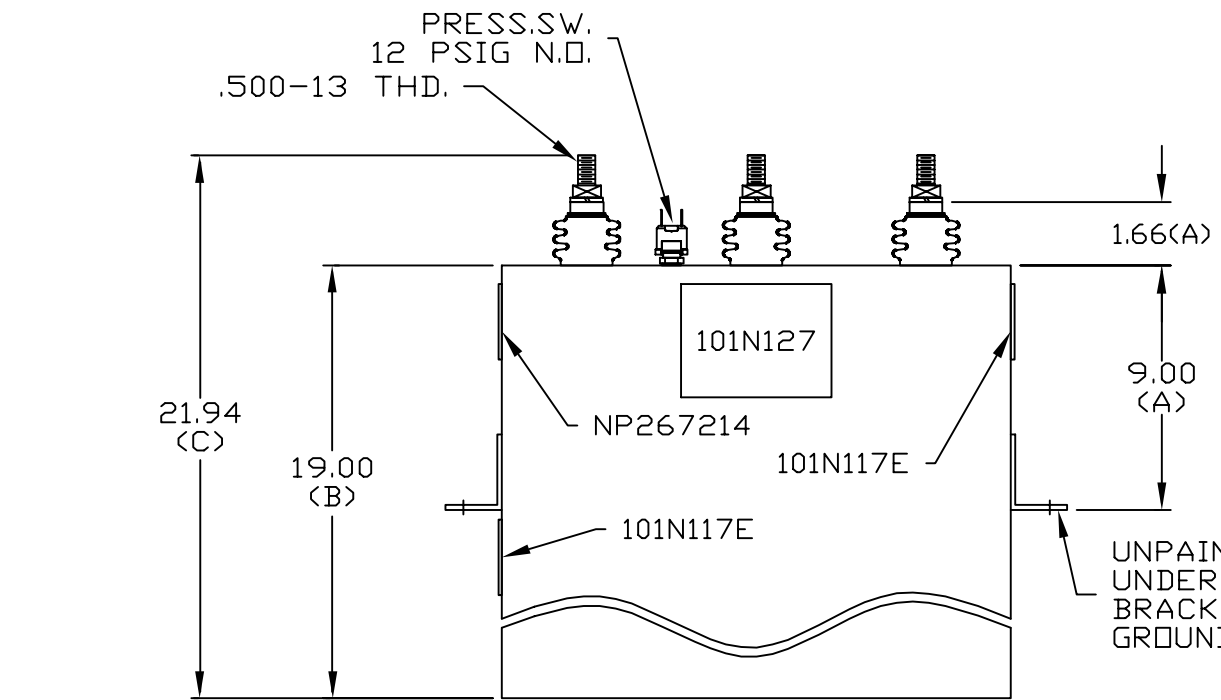
TOL	+/-	BUSH. DIA. 1.75[44](B)
A	.06	
B	.12	
C	.18	
D	.50	
E	.04	



TERM	uF	kVAR
1	401.1	50
2	401.1	50



SCHEMATIC DIAGRAM - 212



WITH INTERNAL DISCH RESISTORS
 CAT. 16L0501TH4 SN
 100 KVAR 575 V 60 HZ 1 PH
 1.90 GAL. COMBUSTIBLE LIQUID
 CAUTION! BEFORE INSTALLING OR
 OPERATING READ GEH
 NP267214

* UP TO +.50
 CASE BULGE

MAX. TERMINAL
 TIGHTENING TORQUE
 15 FT-LBS

NP267192A

INDUSTRIAL SYSTEMS FORT EDWARD, N.Y., U.S.A.		SIZE A	<h1>OUTLINE</h1> <h2>16L0501TH4</h2>	
DRAWN W.DEGROFF	DATE 1/10/96	SCALE		
ISSUED	DATE	SHEET 2	CONT ON 3	DISTR. TO