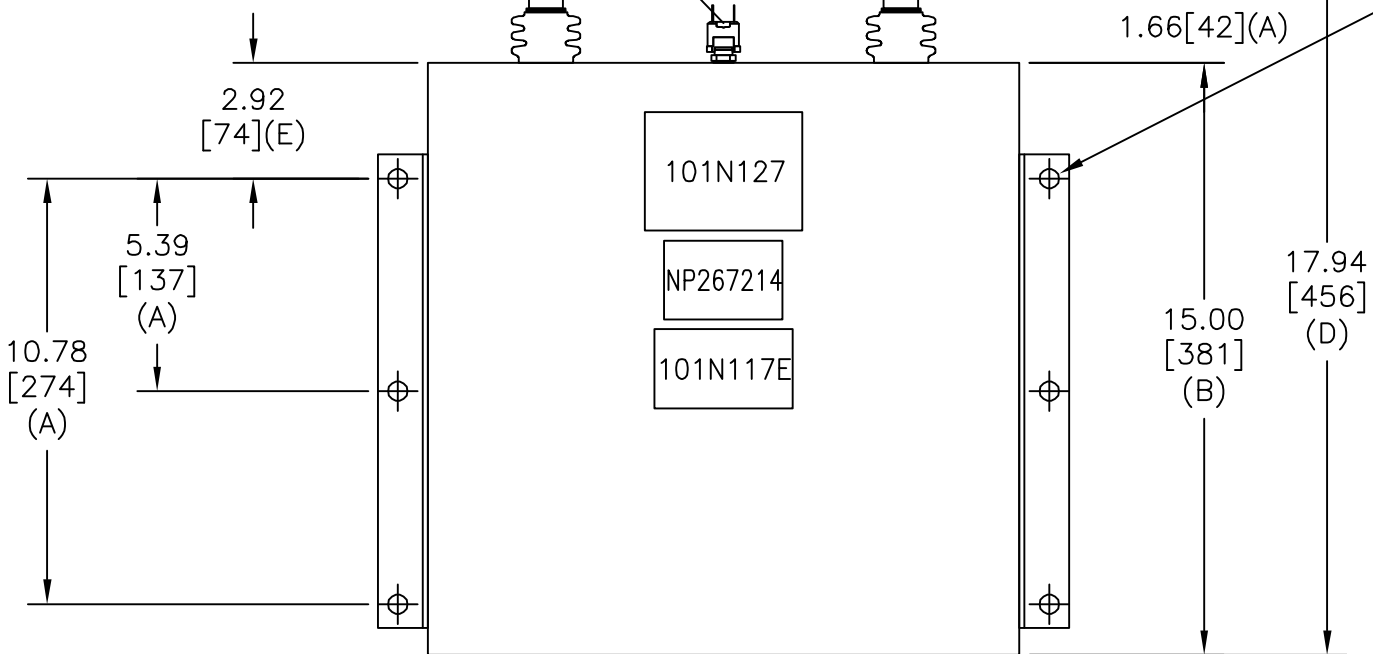
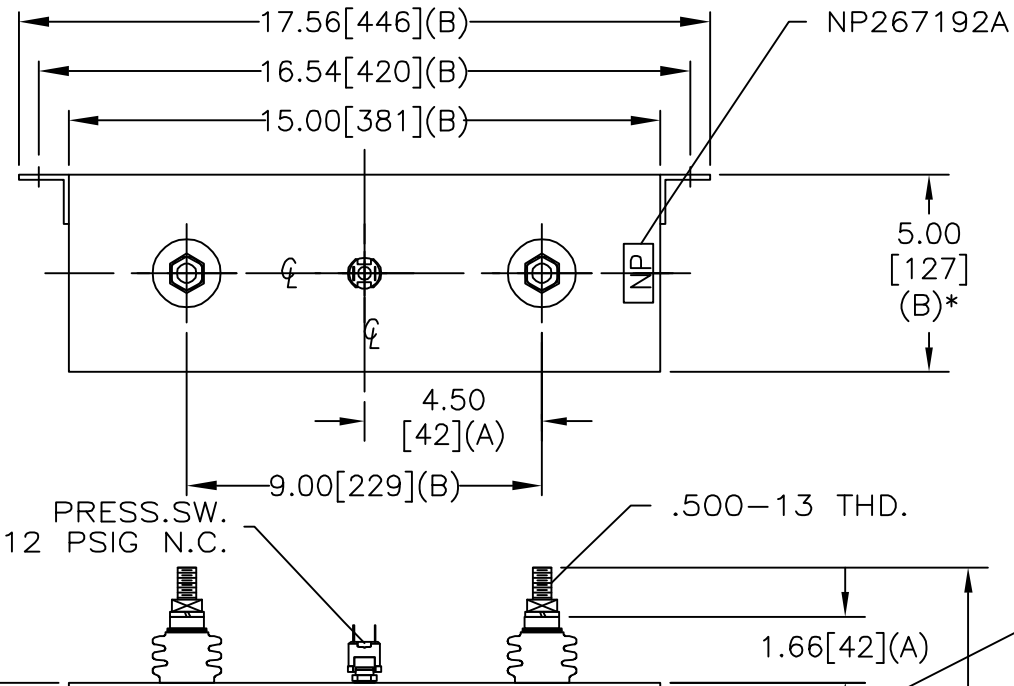
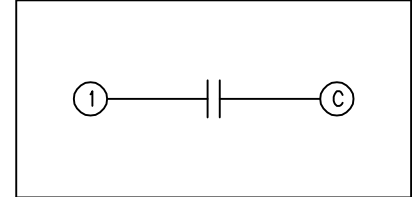


SIZE A	DWG NO 17L0635TH	SHT 2	REV 6
REV 6	DESCRIPTION CHG NOTE TO BKT	DATE 5/25/05	APPROVED EJM

TOL	+/-	BUSH. DIA.
A	.06	1.75[44](B)
B	.12	
C	.18	
D	.50	
E	.04	



UNPAINTED AREA UNDER BACK (FLUSH)
SIDE MOUNTING HOLE OF BOTH
BRACKETS FOR GROUNDING



SCHEMATIC DIAGRAM - 100

NO INTERNAL DISCH RESISTORS
CAT. 17L0635TH SN
900VDC 2400UF -0 +10%
160ARMS
2.7 GAL. COMBUSTIBLE LIQUID
CAUTION! BEFORE INSTALLING OR
OPERATING READ GEH2736+2741
MADE IN MEXICO

NP267214

* UP TO +.50[13]
CASE BULGE

MAX. TERMINAL
TIGHTENING TORQUE
15 FT-LBS

NP267192A

	INDUSTRIAL SYSTEMS FORT EDWARD, N.Y., U.S.A.		SIZE A
	DRAWN HUMPHRIES	DATE 1-23-91	SCALE
ISSUED	DATE 1-24-91		

OUTLINE 17L0635TH	
SHEET 2	CONT ON 3

DISTR. TO