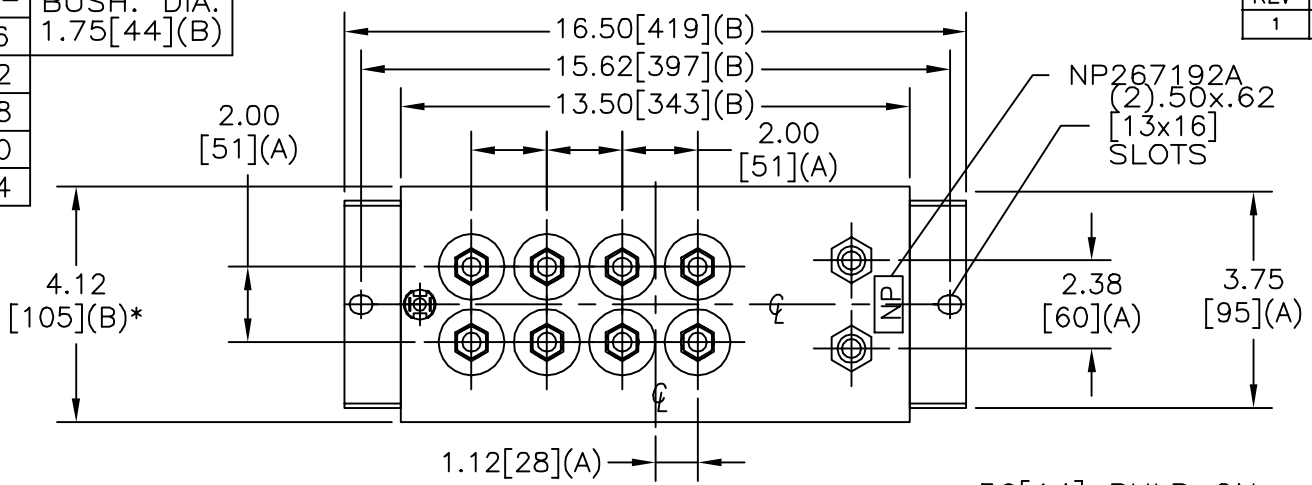
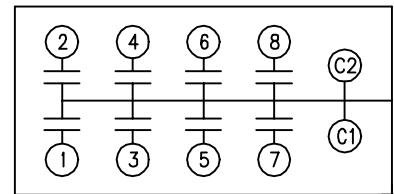


SIZE A	DWG NO 19L0046WH4	SHT 2	REV 1
REV 1	DESCRIPTION	DATE	APPROVED
1	UPDATE CAT NO	7/9/03	BTR

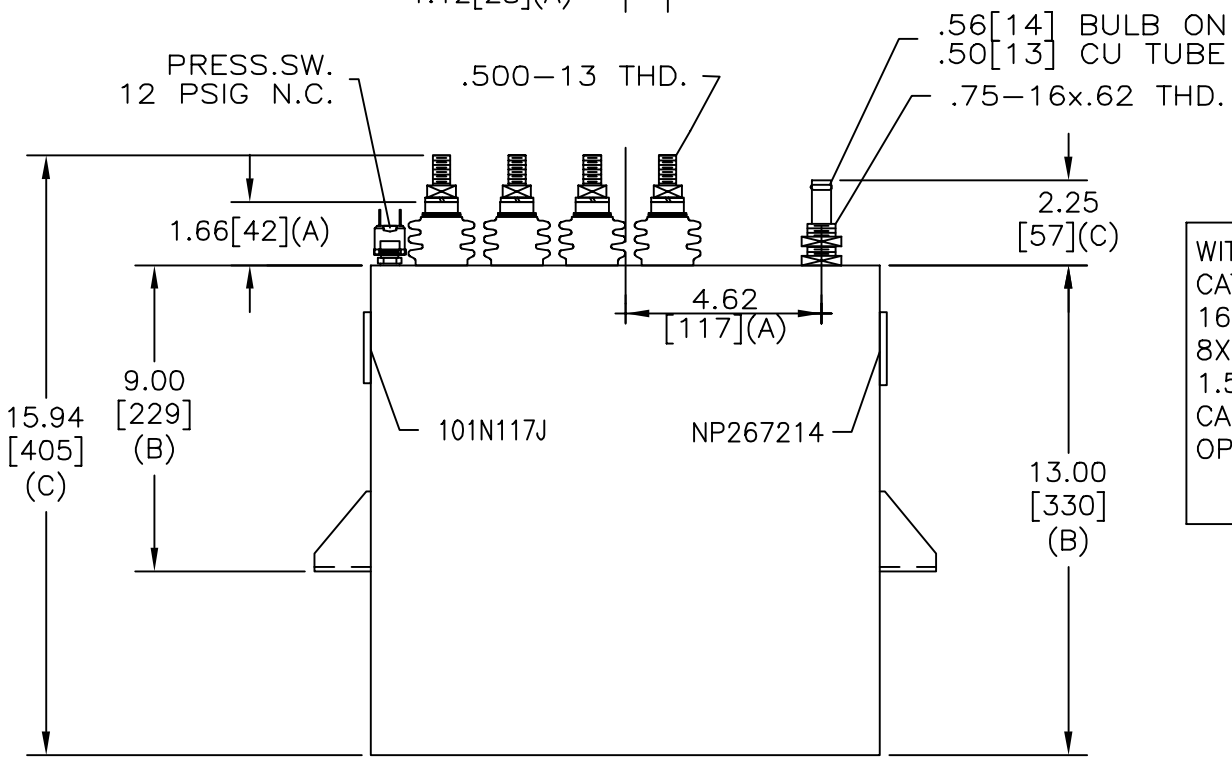
TOL	+/-	BUSH. DIA.
A	.06	1.75[44](B)
B	.12	
C	.18	
D	.50	
E	.04	



TERM	uF	kVAR
1	5.00	201
2	5.00	201
3	5.00	201
4	5.00	201
5	5.00	201
6	5.00	201
7	5.00	201
8	5.00	201



SCHEMATIC DIAGRAM - 801



WITH INTERNAL DISCH RESISTORS
 CAT. 19L0046WH SN
 1608KVAR 800V 10000HZ 1PH
 8X5.00 UF/TAP
 1.50 GAL. COMBUSTIBLE LIQUID
 CAUTION! BEFORE INSTALLING OR
 OPERATING READ GEH-2733

NP267214

* UP TO +.50[13]
 CASE BULGE

MAX. TERMINAL
 TIGHTENING TORQUE
 15 FT-LBS

NP267192A

	INDUSTRIAL SYSTEMS FORT EDWARD, N.Y., U.S.A.		SIZE A
	DRAWN E. McGinn	DATE FEB 18, 1997	SCALE
ISSUED	DATE 2/19/97		

OUTLINE 19L0046WH4	
SHEET 2	CONT ON -

DISTR. TO