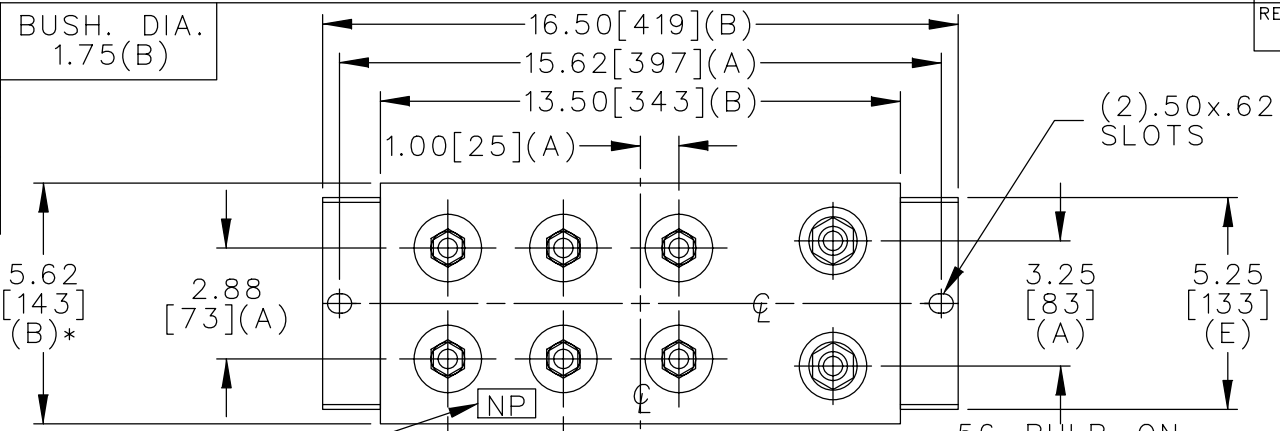
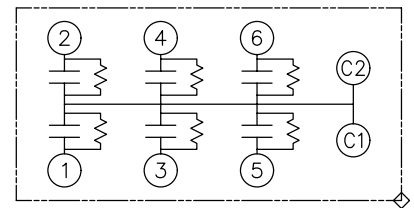
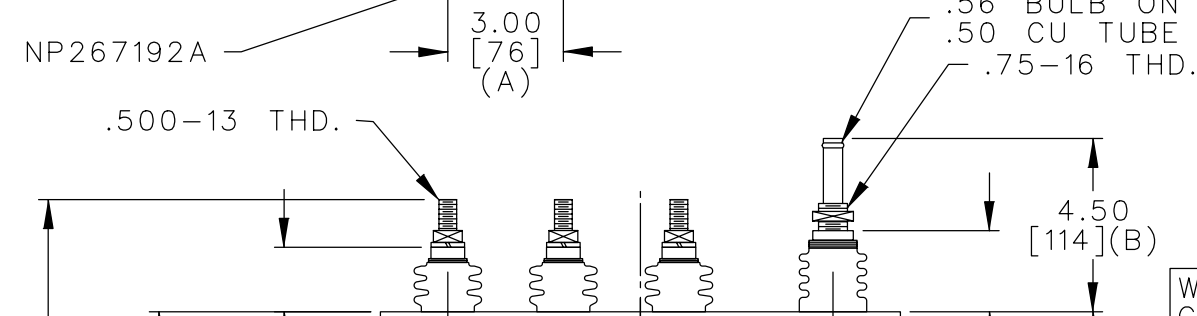


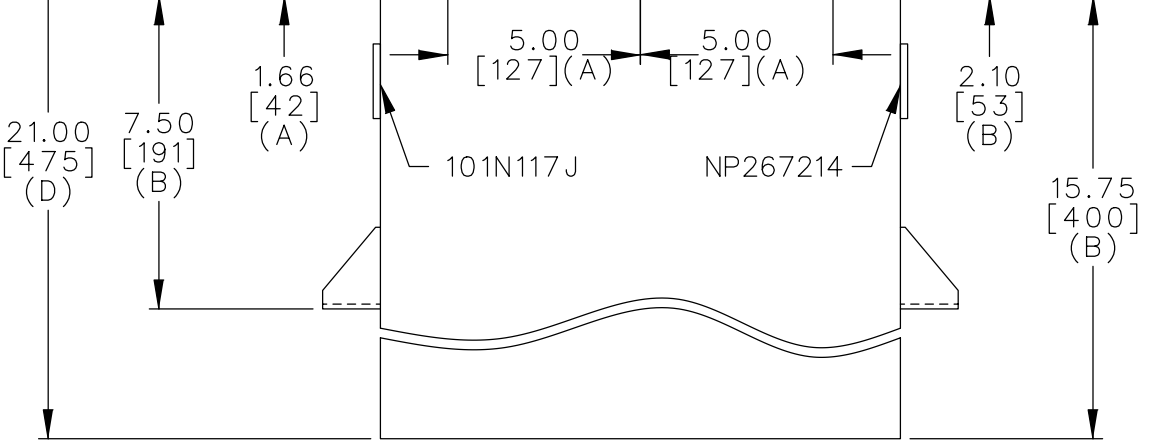
TOL	+/-
A	.06
B	.12
C	.18
D	.50
E	.04



TERM	uF	kVAR
1	21.22	300
2	21.22	300
3	21.22	300
4	21.22	300
5	21.22	300
6	21.22	300



WITH INTERNAL DISCH RESISTORS
 CAT. 19L0048WH3 SN
 1800KVAR 1500V 1000HZ 1PH
 6x21.22 UF/TAP
 2.2 GAL. COMBUSTIBLE LIQUID
 CAUTION! BEFORE INSTALLING
 OR OPERATING READ GEH-2733
 NP267214



* UP TO +.50
 CASE BULGE

MAX. TERMINAL
 TIGHTENING TORQUE
 15 FT-LBS

NP267192A

	CAPACITOR & POWER PROTECTION FORT EDWARD, N.Y., U.S.A.		SIZE A	OUTLINE 19L0048WH3	SHEET 2 CONT. ON -
	DRAWN E.McGINN	DEC. 5, 1996	SCALE		
ISSUED	12-11-96	DISTR TO			