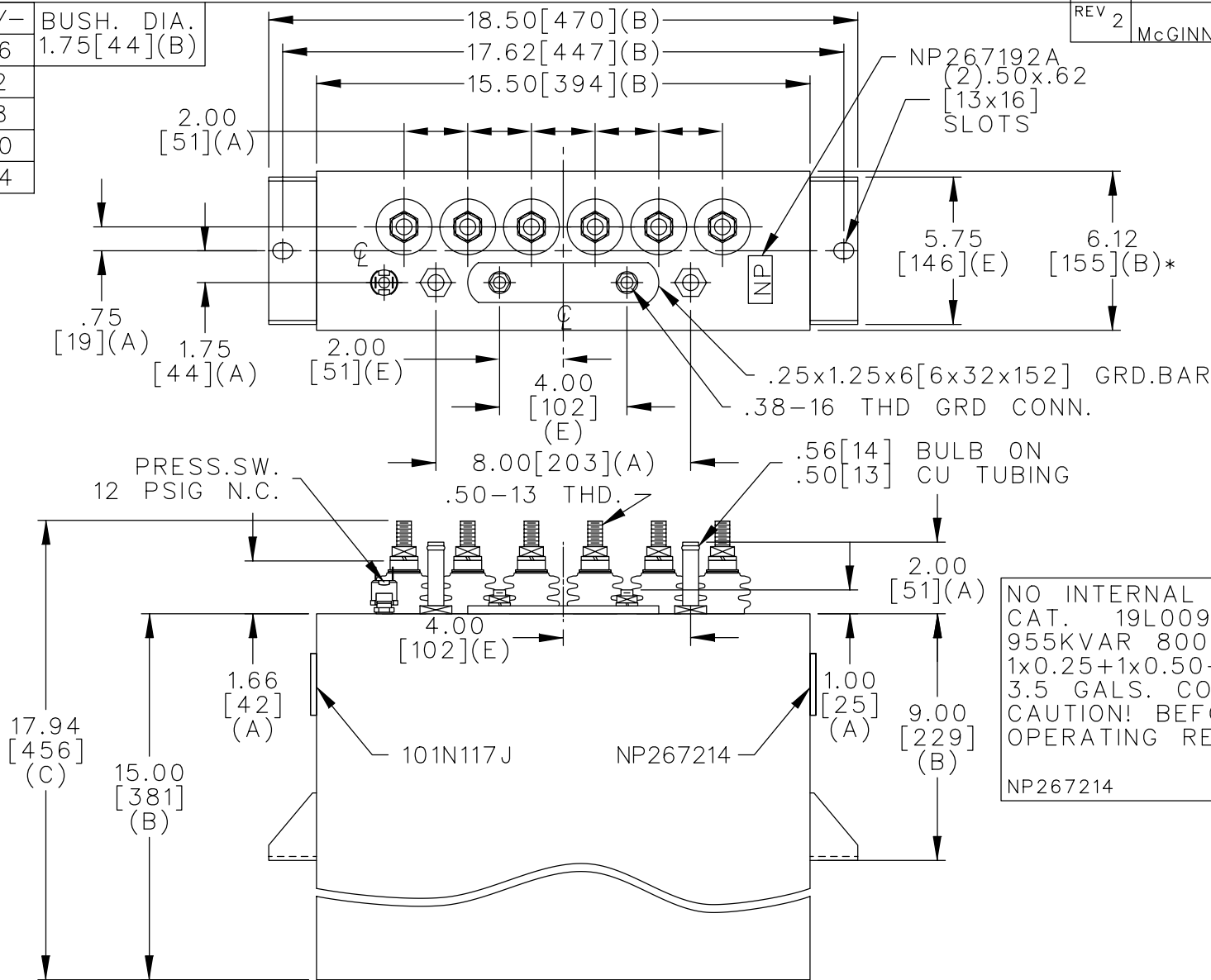
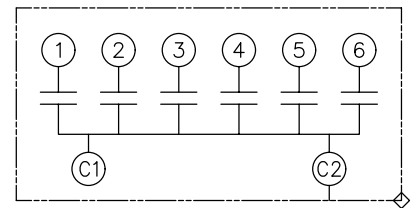


TOL	+/-	BUSH. DIA.
A	.06	1.75[44](B)
B	.12	
C	.18	
D	.50	
E	.04	



TERM	uF	kVAR
1	0.25	50.26
2	0.50	100.5
3	1.00	201.0
4	1.00	201.0
5	1.00	201.0
6	1.00	201.0



SCHEMATIC DIAGRAM - 601

NO INTERNAL DISCH RESISTORS
 CAT. 19L0093WH4 SN
 955KVAR 800V 5000HZ 1PH
 1x0.25+1x0.50+4x1.00 UF/TAP
 3.5 GALS. COMBUSTIBLE LIQUID
 CAUTION! BEFORE INSTALLING OR
 OPERATING READ GEH-2733
 NP267214

* UP TO +.50[13]
 CASE BULGE

MAX. TERMINAL
 TIGHTENING TORQUE
 15 FT-LBS

NP267192A

	CAPACITOR & POWER PROTECTION FORT EDWARD, N.Y., U.S.A.		SIZE A	OUTLINE 19L0093WH4	SHEET 2 CONT. ON -
	DRAWN E.McGINN	JAN. 17, 1997	SCALE		
ISSUED	1-22-97	DISTR TO			