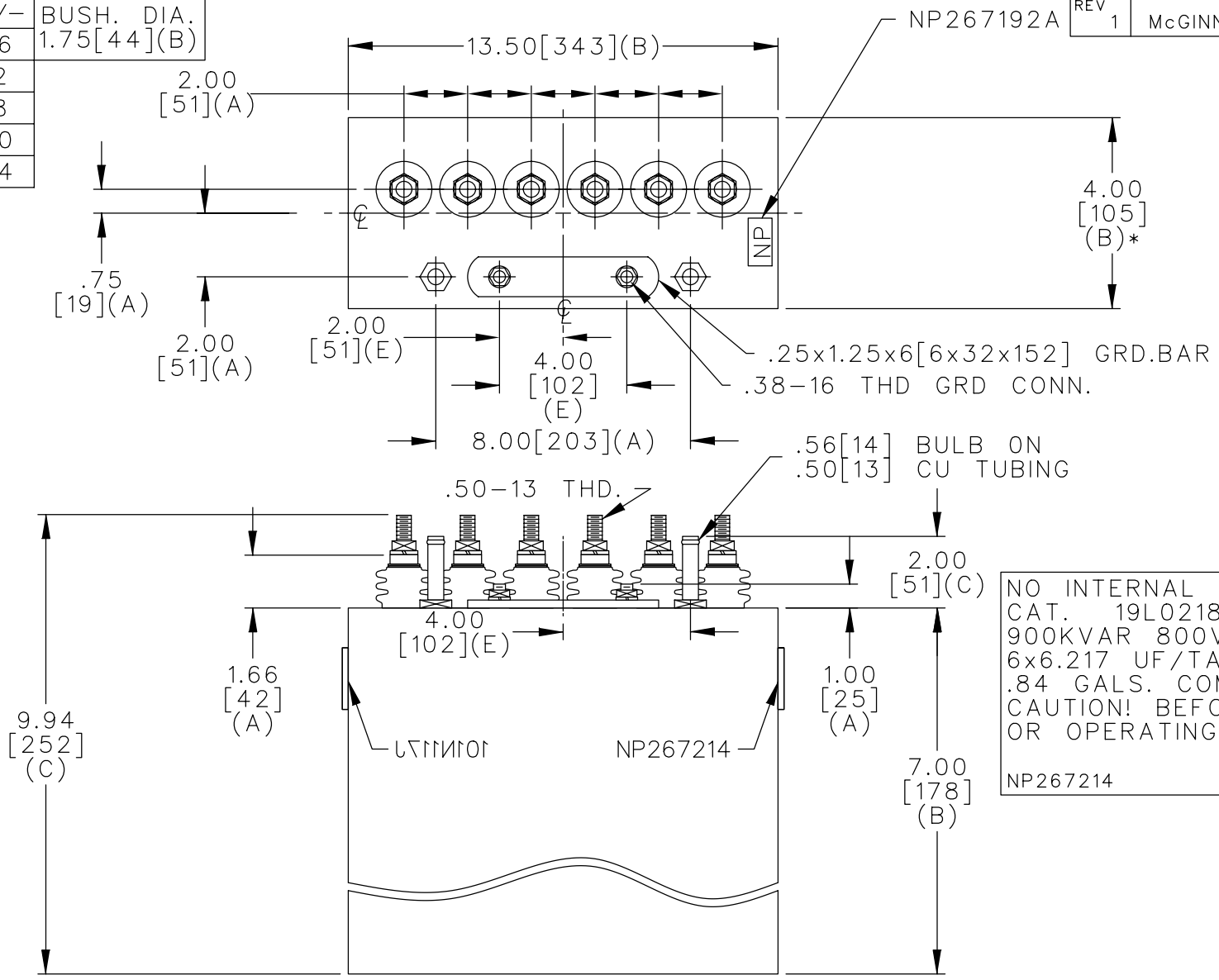
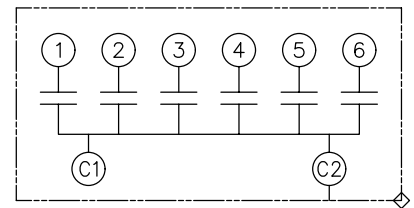


TOL	+/-	BUSH. DIA.
A	.06	1.75 [44] (B)
B	.12	
C	.18	
D	.50	
E	.04	



TERM	uF	kVAR
1	6.217	150
2	6.217	150
3	6.217	150
4	6.217	150
5	6.217	150
6	6.217	150



SCHEMATIC DIAGRAM - 601

NO INTERNAL DISCH RESISTORS
 CAT. 19L0218WH1 SN
 900KVAR 800V 6000HZ 1PH
 6x6.217 UF/TAP
 .84 GALS. COMBUSTIBLE LIQUID
 CAUTION! BEFORE INSTALLING
 OR OPERATING READ GEH-2733
 NP267214

* UP TO +.50 [13]
 CASE BULGE

MAX. TERMINAL
 TIGHTENING TORQUE
 15 FT-LBS

NP267192A

	CAPACITOR & POWER PROTECTION FORT EDWARD, N.Y., U.S.A.		SIZE A	OUTLINE 19L0218WH1	
	DRAWN E.McGINN	MAR. 20, 1998	SCALE		
ISSUED	3-25-98		SHEET 2	CONT. ON -	DISTR TO