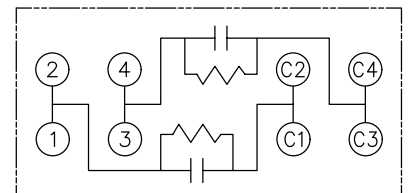
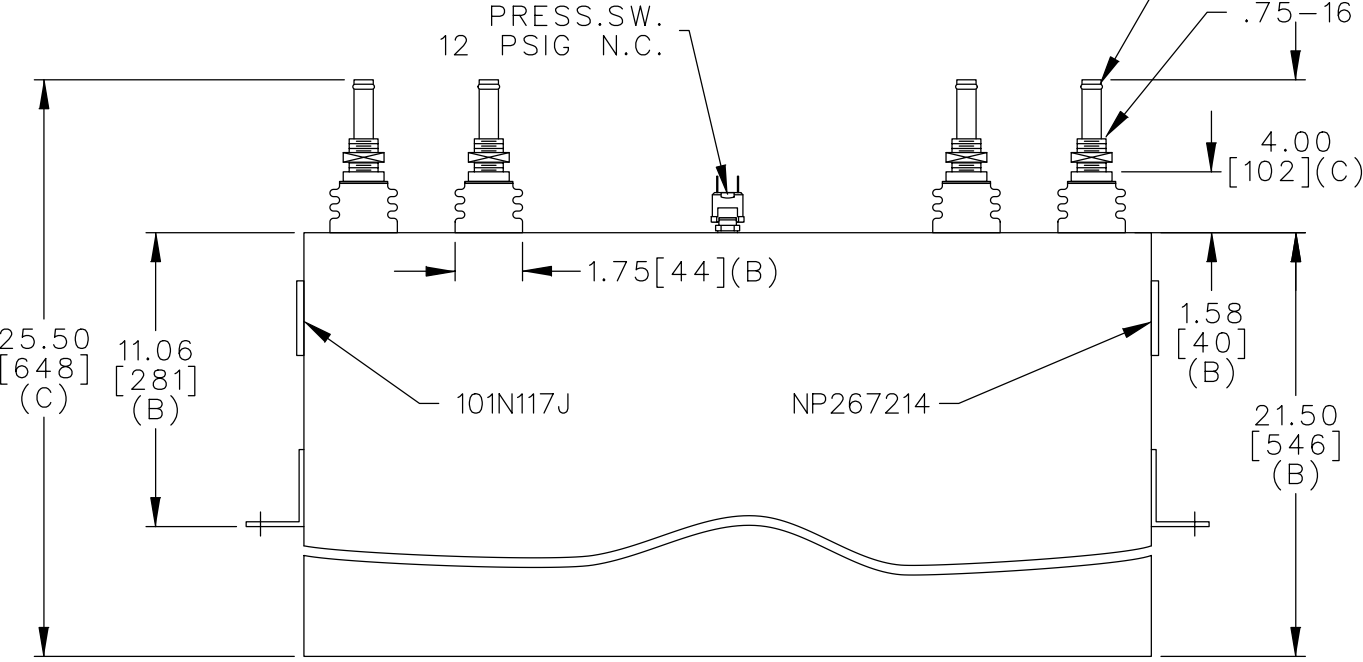
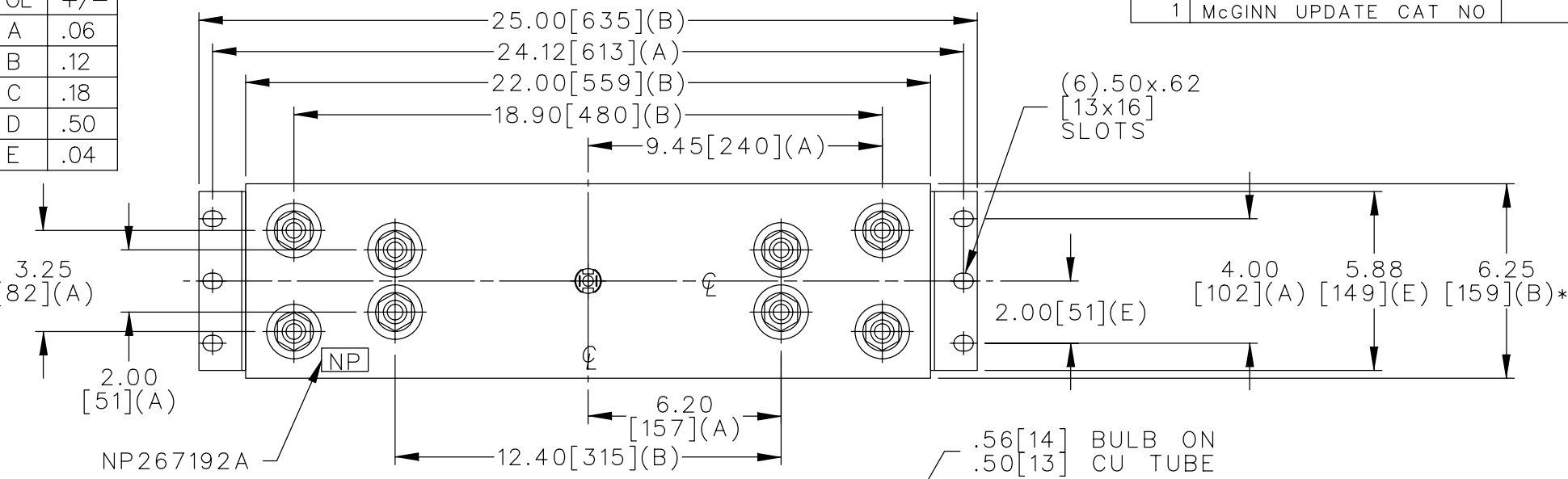


TOL	+/-
A	.06
B	.12
C	.18
D	.50
E	.04



SCHEMATIC DIAGRAM - 240

WITH INTERNAL DISCH RESISTORS  
CAT. 19L0359WH4 SN  
7200KVAR 1500V 1200HZ  
2 x 212.2 UF/TAP  
4.1 GAL COMBUSTIBLE LIQUID  
CAUTION! BEFORE INSTALLING  
OR OPERATING READ GEH-2733

NP267214

\* UP TO +.75 [19] CASE BULGE

MAX. TERMINAL TIGHTENING TORQUE  
15 FT-LBS

NP267192A

CAPACITOR & POWER PROTECTION  
FORT EDWARD, N.Y., U.S.A.

DRAWN E.McGINN OCT. 10, 1997

ISSUED 10-15-97

SIZE  
**A**

OUTLINE  
**19L0359WH4**

SCALE

SHEET 2

CONT. 3  
ON 3

DISTR TO