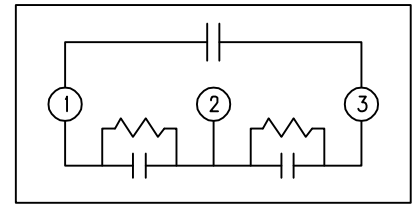
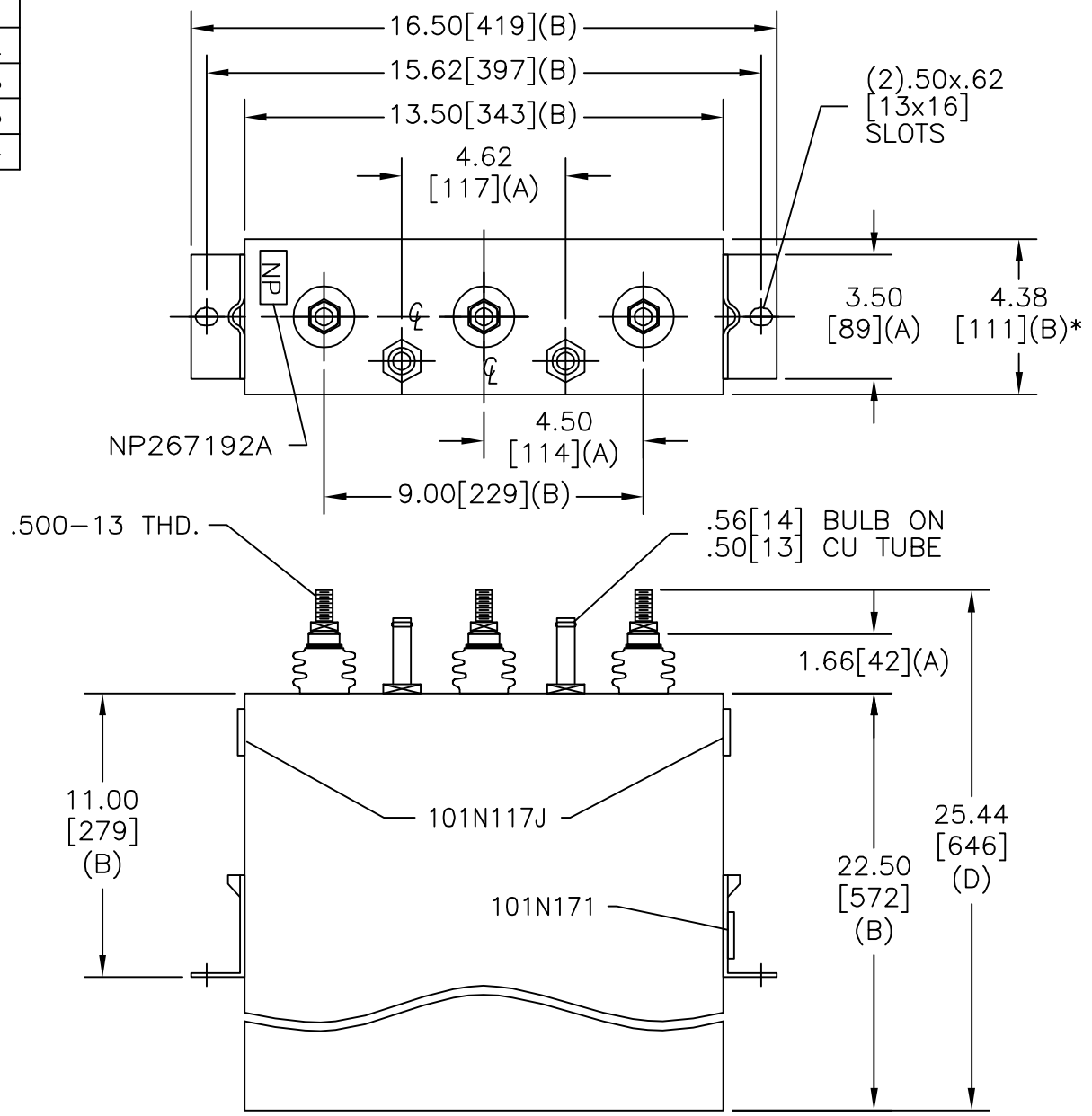


TOL	+/-
A	.06
B	.12
C	.18
D	.25
E	.04

SIZE A	DWG NO 19L0474WH3	SHT 2	REV 2
REV 2	DESCRIPTION RE-TRACE	DATE 3/30/05	APPROVED BTR



SCHEMATIC DIAGRAM - 304

1200V            1 PH            kVBIL  
 180 KVAR        60 Hz  
 CAT 19L0474WH3    SN  
 2.1 GAL.  
 MFG DATE  
 101N171            READ GEH- 2733

\* UP TO +.50 [13] CASE BULGE

MAX. TERMINAL TIGHTENING TORQUE 15 FT-LBS

NP267192A

	INDUSTRIAL SYSTEMS FORT EDWARD, N.Y., U.S.A.		SIZE A
	DRAWN E. McGinn	DATE DEC 19, 1996	SCALE
ISSUED	DATE 1/8/97		

# OUTLINE 19L0474WH3

SHEET 2 CONT ON -

DISTR. TO