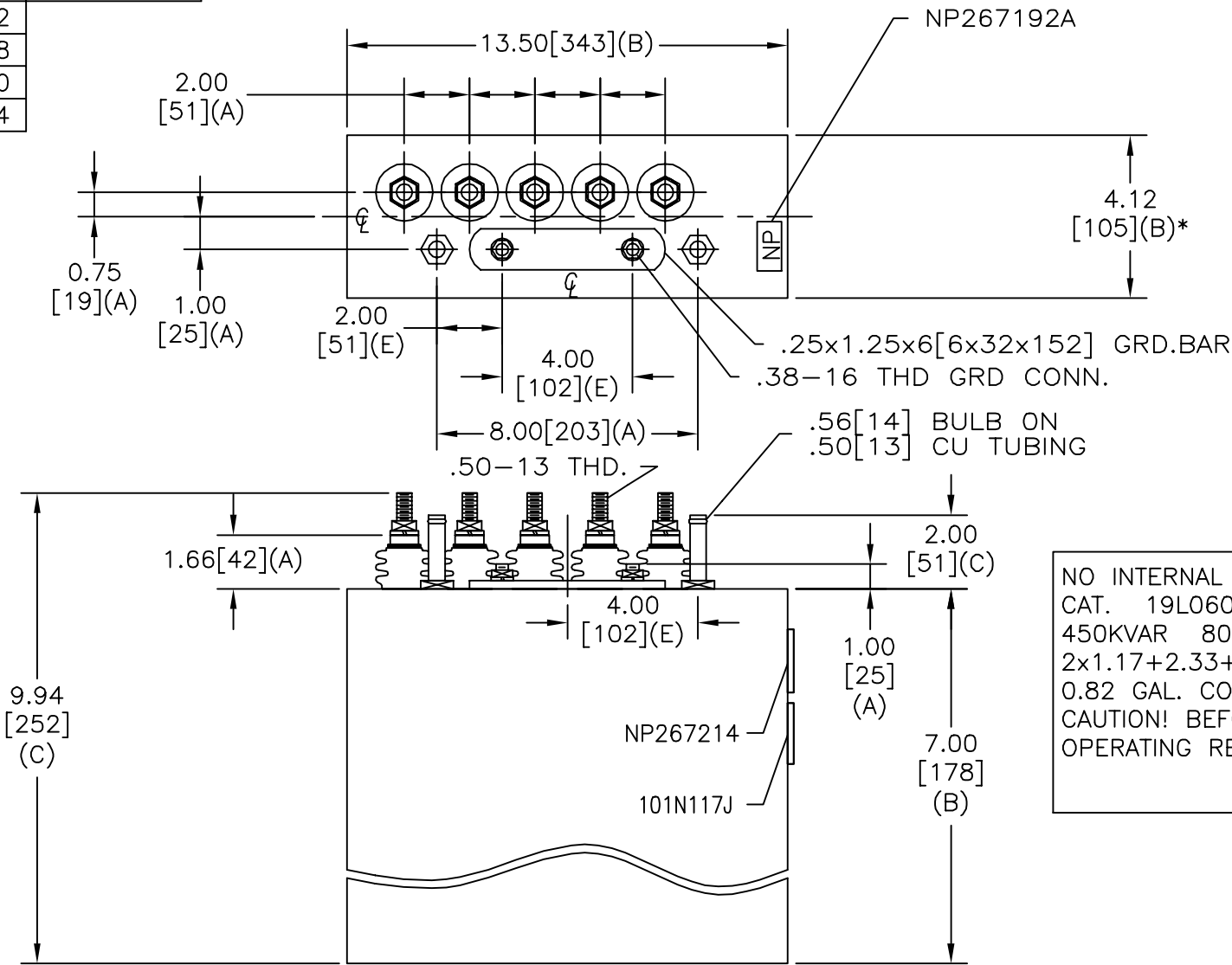
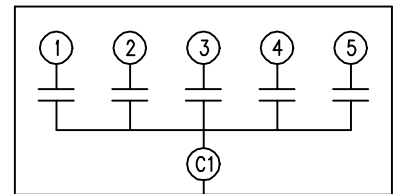


SIZE A	DWG NO 19L0608WH1	SHT 1	REV 1
REV 1	DESCRIPTION UPDATE CAT NO	DATE 8/28/02	APPROVED BROSS

TOL	+/-	BUSH. DIA. 1.75[44](B)
A	.06	
B	.12	
C	.18	
D	.50	
E	.04	



TERM	uF	kVAR
1	1.17	45
2	1.17	45
3	2.33	90
4	3.50	135
5	3.50	135



SCHEMATIC DIAGRAM - 501

NO INTERNAL DISCH RESISTORS
 CAT. 19L0608WH1 SN
 450KVAR 800V 9600HZ 1PH
 2x1.17+2.33+2x3.50 UF/TAP
 0.82 GAL. COMBUSTIBLE LIQUID
 CAUTION! BEFORE INSTALLING OR
 OPERATING READ GEH-2733

NP267214

* UP TO +.50 [13] CASE BULGE

MAX. TERMINAL TIGHTENING TORQUE 15 FT-LBS

NP267192A

	INDUSTRIAL SYSTEMS FORT EDWARD, N.Y., U.S.A.		SIZE A
	DRAWN E. McGinn	DATE NOV. 20, 1996	SCALE
ISSUED	DATE 11-20-96		

<h1>OUTLINE</h1> <h2>19L0608WH1</h2>	
SHEET 2	CONT ON -

DISTR. TO