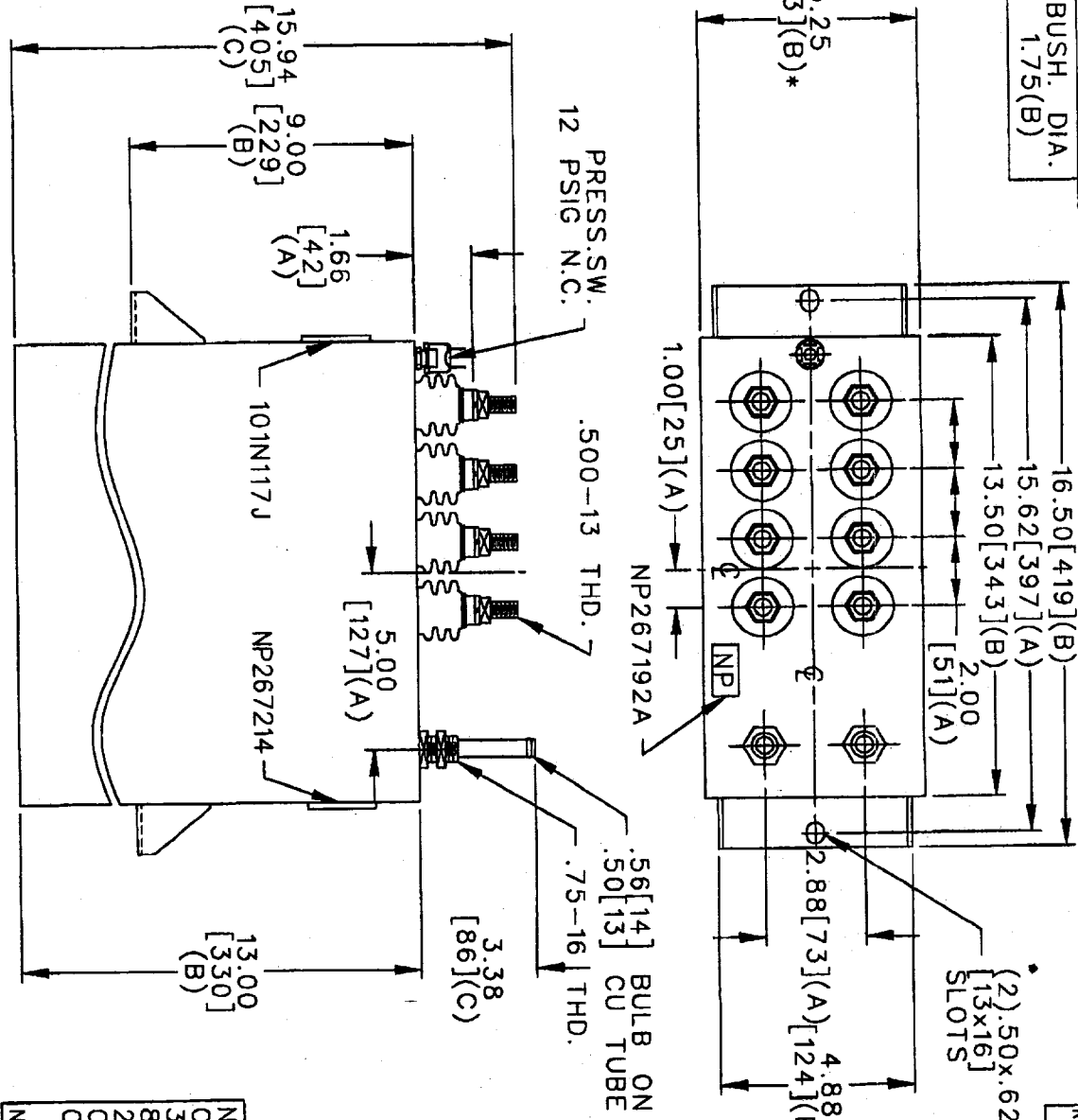


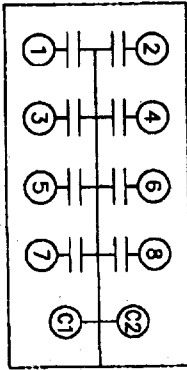
19L516WH

TOL	+/-	BUSH. DIA.
A	.06	1.75(B)
B	.12	
C	.18	
D	.50	
E	.04	



SIZE	DWG NO.	SH	REV
A	19L516WH4	DATE	

TERM	UF	KVAR
1	3.82	375
2	3.82	375
3	3.82	375
4	3.82	375
5	3.82	375
6	3.82	375
7	3.82	375
8	3.82	375



NO INTERNAL DISCH RESISTORS
 CAT. 19L516WH4 SN
 3000KVAR 1250V 10000HZ 1PH
 8 x 3.82 UF
 2.4 GAL. COMBUSTIBLE LIQUID
 CAUTION! BEFORE INSTALLING
 OR OPERATING READ GEH-2733
 NP267214

* UP TO +.50 [13]
 CASE BULGE

MAX. TERMINAL
 TIGHTENING TORQUE
 15 FT-LBS
 NP267192A

ISSUED
 DRAWN E. MCGINN
 CAPACITOR & POWER PROTECTION
 FORT EDWARD, N.Y., U.S.A.
 JAN. 23, 1997

SIZE A
 SCALE
 OUTLINE
 19L516WH4
 SHEET 2 CONT. ---