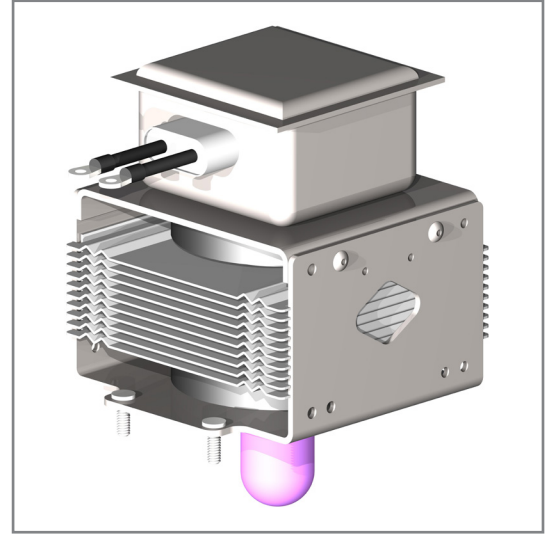


## Description:

The NL10250-1 is a (CW) magnetron that delivers 2.0kW continuous output power.

- 2.0kW CW power output
- Forced Air - cooled anode
- Prob Output
- Selected Frequency Range of 2445 to 2465 MHz



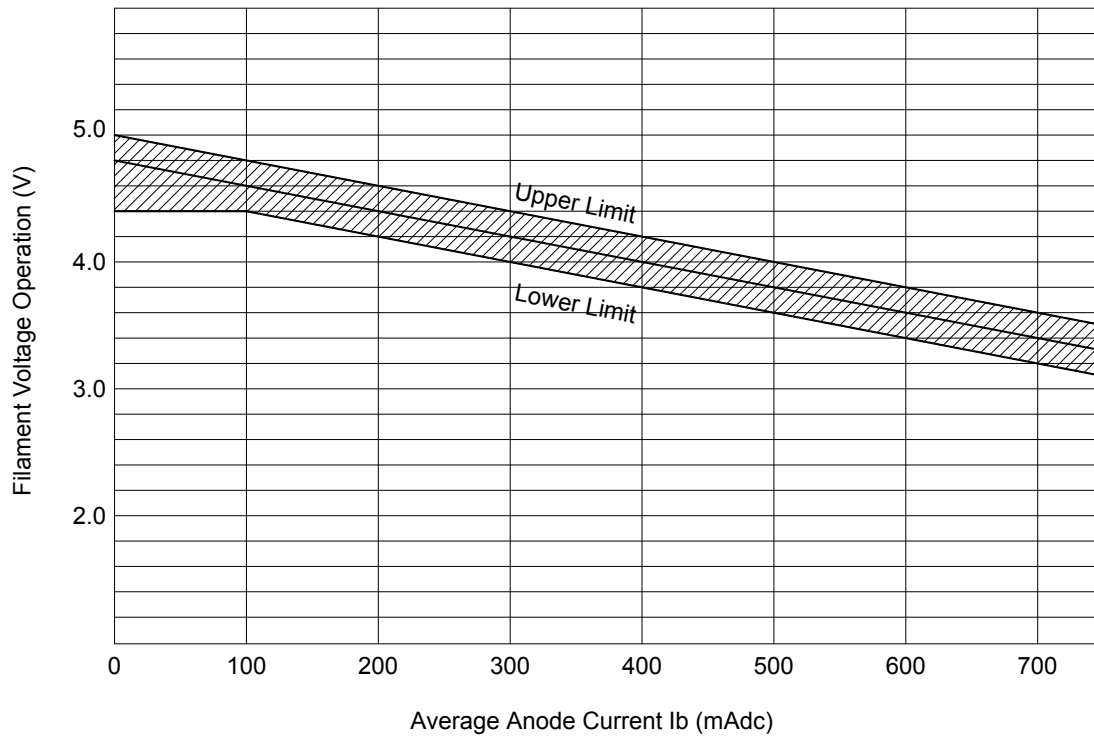
## Characteristic Parameters:

### ELECTRICAL

Operating frequency:	2455 MHz
Power output:	2.0 kW (into a matched load)
Anode voltage:	4.0 kV
Average Anode current:	725 mA
Filament voltage (standby):	4.6 Vac
Filament voltage (operation):	See filament voltage reduction schedule Figure 1
Load VSWR	≤1:1

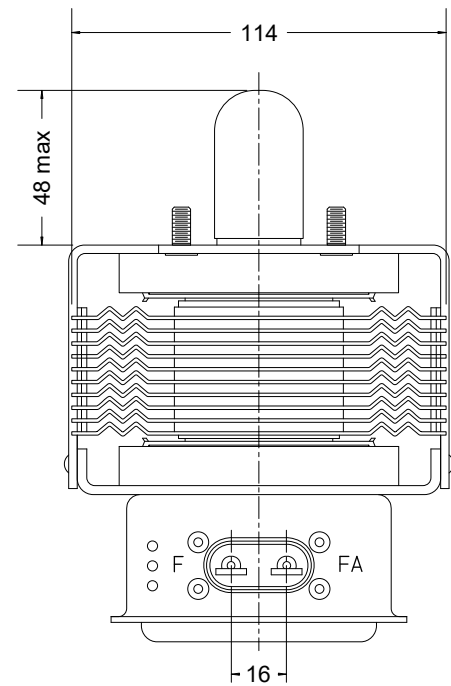
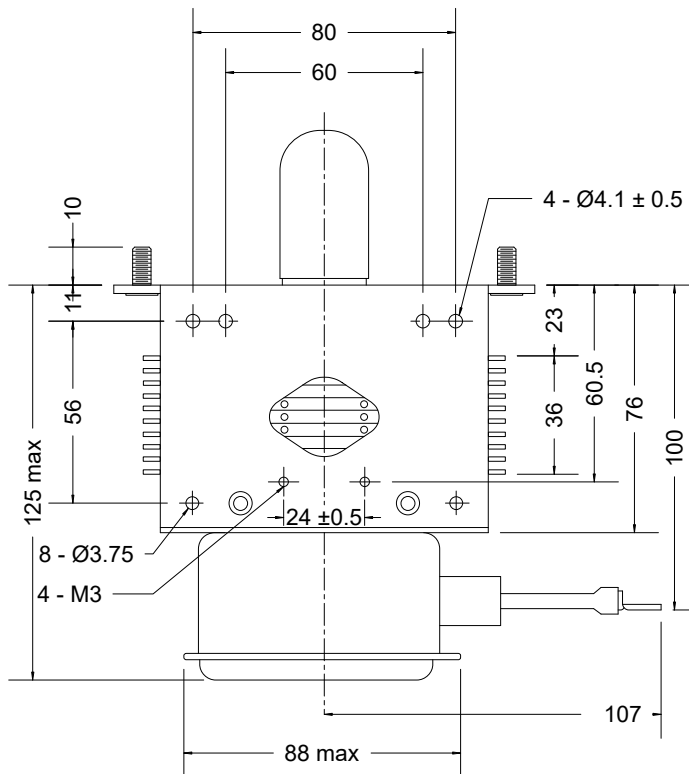
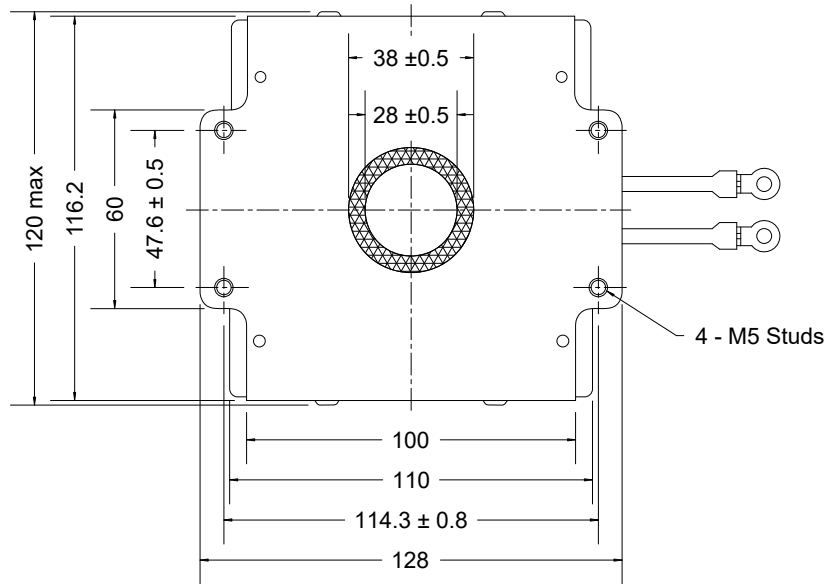
### MECHANICAL

RF launch type:	Into Rectangular waveguide or into oven cavity
Net Weight:	4.6 lbs. (2.1 Kg)



**Fig. 1 Reduction Chart of Filament Voltage**

*Note: Specifications subject to change without notice.*

**Outline Drawing:**


Note: Unless otherwise noted, dimensions are nominal values in mm. Specifications subject to change without notice.